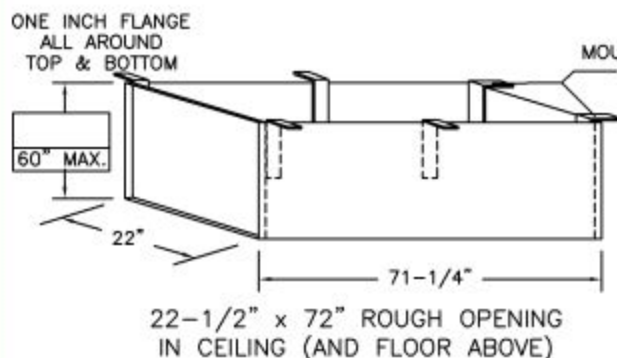


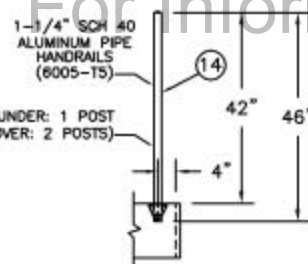
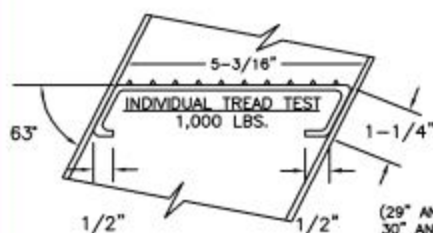
SUPER SIMPLEX DISAPPEARING STAIRWAY WITH NON-RATED ALUMINUM DOOR

(USE THIS DRAWING FOR CEILING HEIGHTS FROM 12'-1" TO 13'-6")

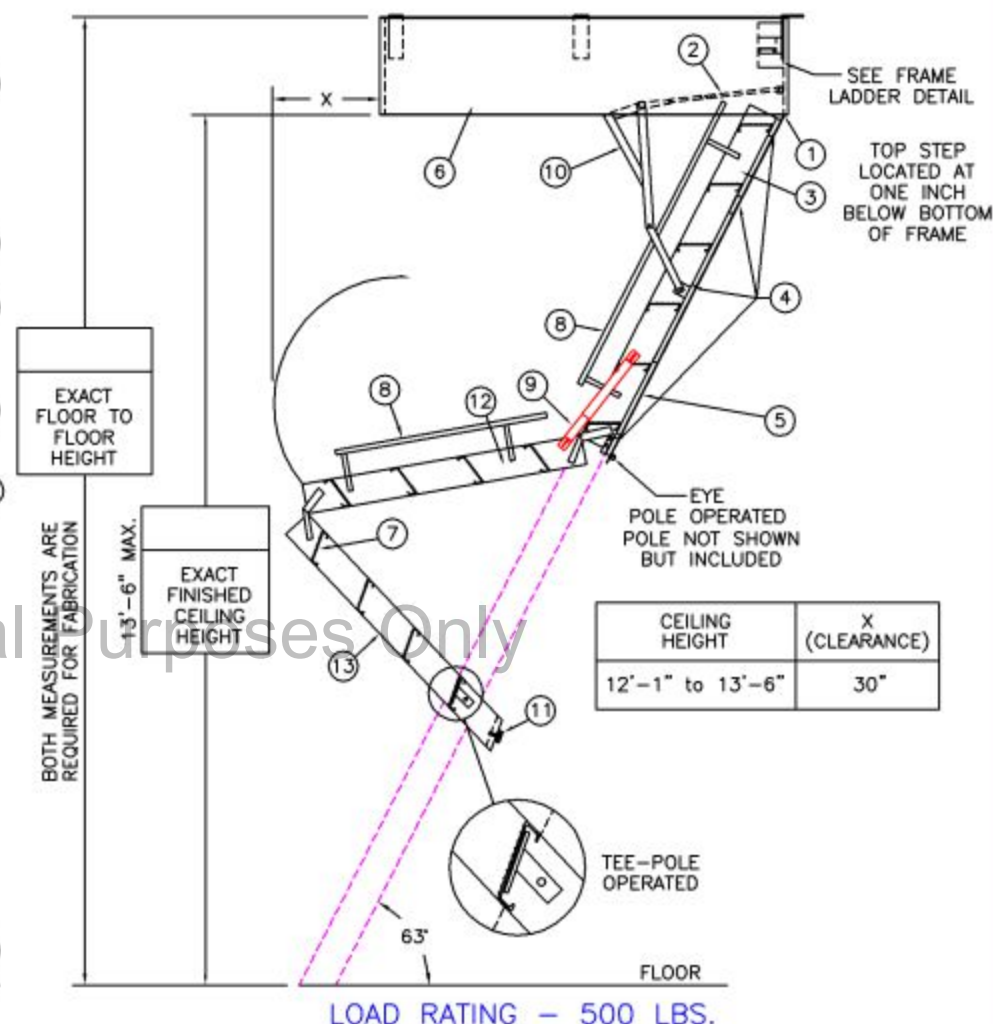
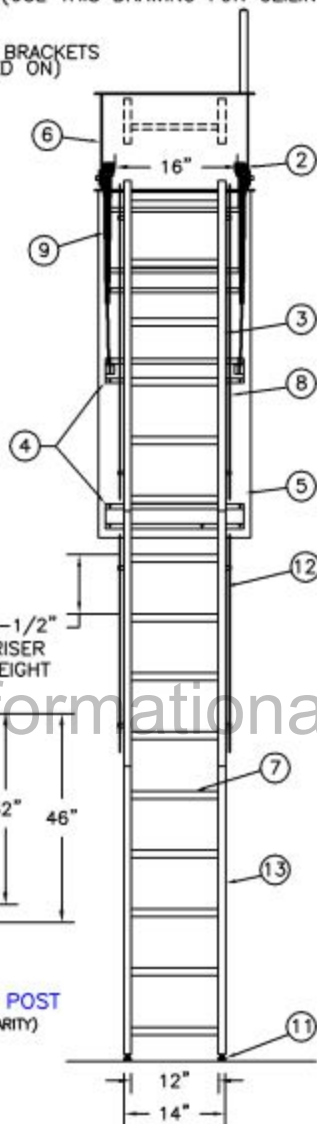
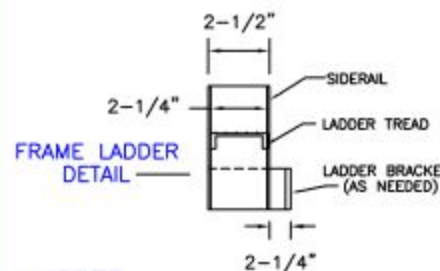


SPECIAL DEEP BOX FRAME

1/8" STEEL, TO CONTAIN ALUMINUM SUPER SIMPLEX FOLDING STAIRWAY CUT FOR EXACT FINISHED CEILING HEIGHT. THIS FRAME, WITH FACTORY INSTALLED BUILT-IN TREADS, PROVIDES STEPS FROM THE DROPPED-CEILING LINE TO THE UPPER FLOOR.



BOX FRAME SAFETY POST (NOT IN SIDE VIEW FOR CLARITY)



NOTES

DIMENSIONS ON THIS DRAWING PERTAIN ONLY TO CEILING HEIGHTS OVER 12'-0".
MANUFACTURER RECOMMENDS 2 PEOPLE TO OPEN/CLOSE SHIPS COMPLETELY ASSEMBLED AS ONE UNIT

LADDER LEGEND

1. STEEL PIANO DOOR HINGE
2. DOUBLE SPRING ACTION
3. SIDE RUNNER 5" ALUM.
4. BATTEN 1/8" ALUM.
5. INSULATED STEEL DOOR
6. STEEL BOX FRAME
7. TREAD (SERRATED ALUM.)
8. HANDRAIL BOTH SIDES
9. FOLD ASSIST
10. EXTRA HEAVY OPERATING ARM
11. ADJUSTABLE FOOT
12. MIDDLE SECTION
13. BOTTOM SECTION
14. BOX FRAME SAFETY POST

NOT TO SCALE

S2162-BD-22.5