

Violin II

Sinfonia No 28

en Do Mayor
K. 200

Wolfgang Amadeus Mozart
Transcrip. Gory
info@gory.jazztel.es

Allegro spiritoso

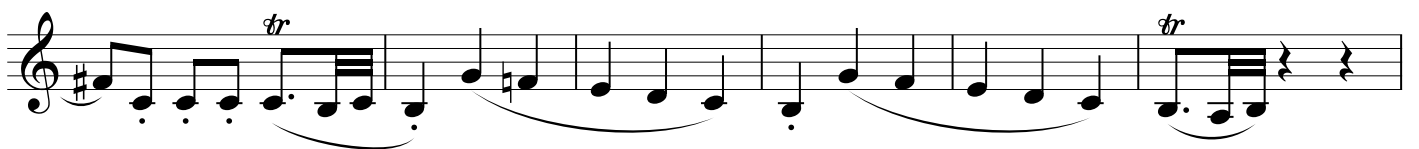
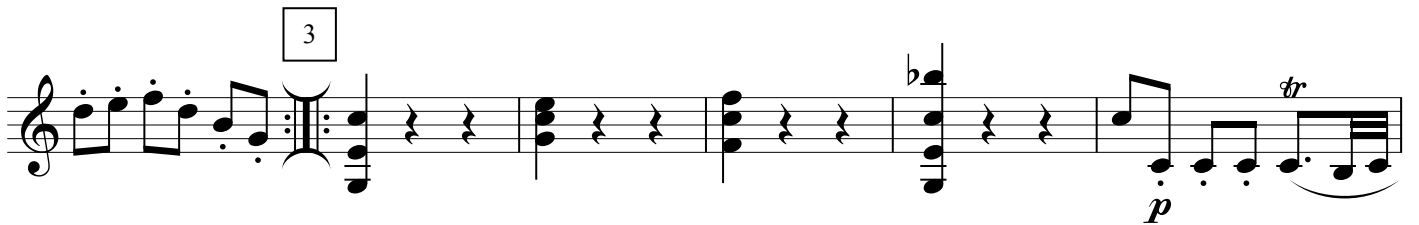
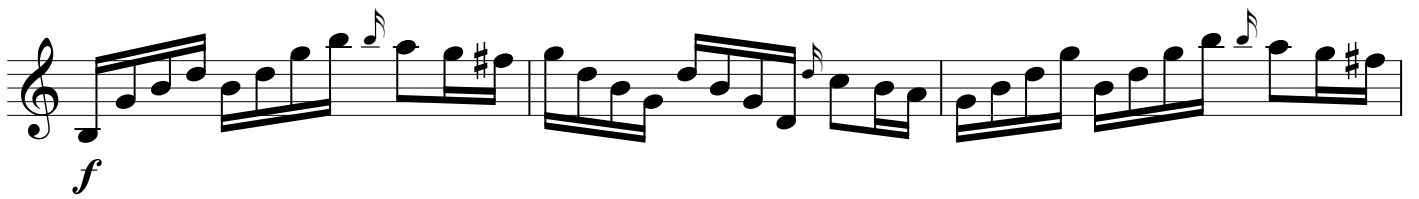
I.

f *p* *f* *p* *f* *p* *f* *p* *f* *p*

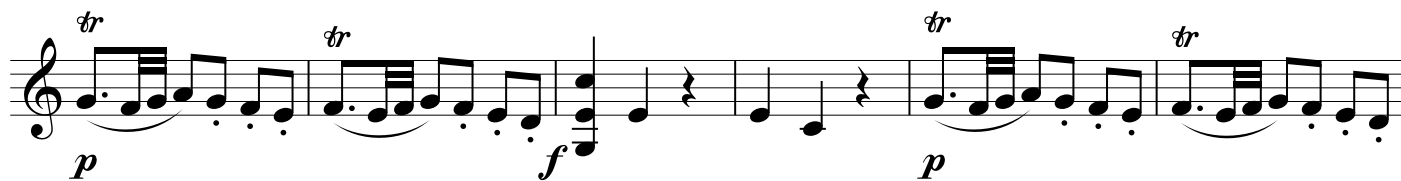
2

1

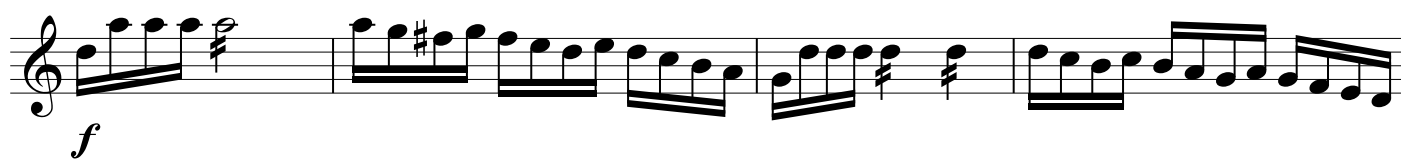
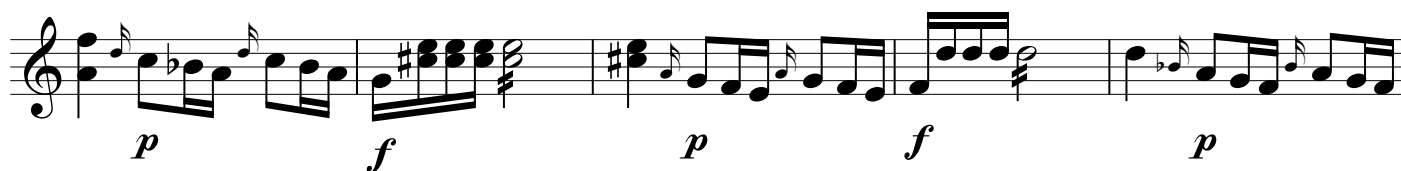
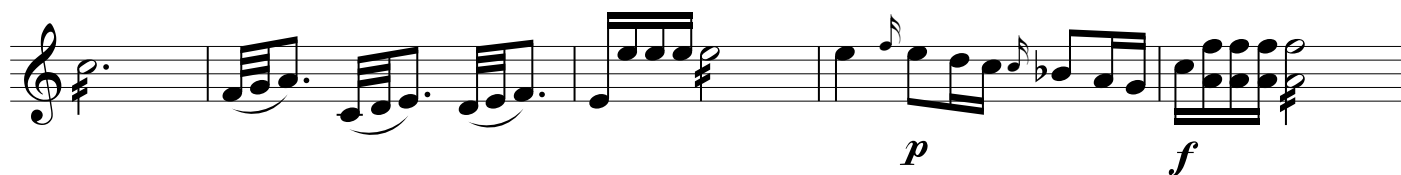
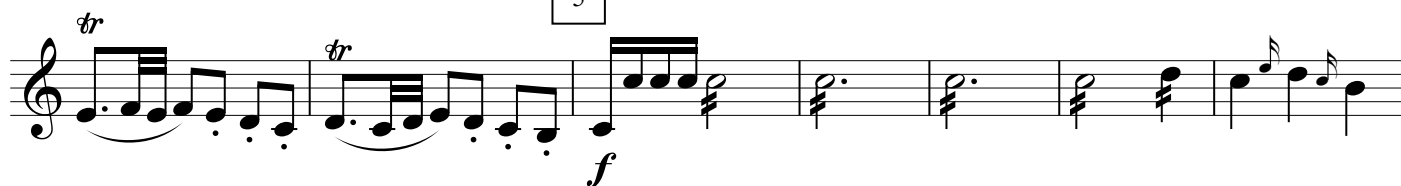
3



4



5



6



[illegible]

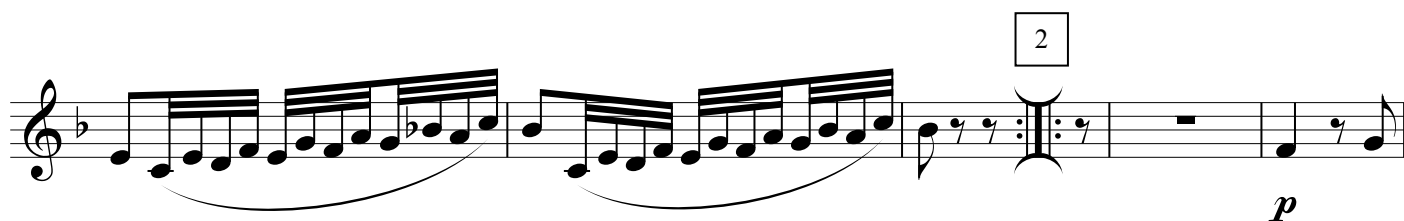
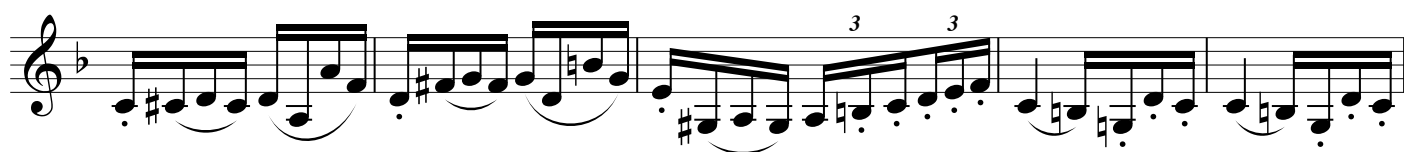
7

A musical score for the song 'The Rose Tree'. The score is written on a single staff with a treble clef. It begins with a key signature of one flat (B-flat) and a common time signature (C). The melody consists of eighth and sixteenth notes, with some measures containing beamed sixteenth notes. There are two trills marked with 'tr' above the notes. A double bar line is followed by a measure with a '2' above it, indicating a second ending. The piece concludes with a double bar line and a repeat sign. The tempo/mood is indicated by 'p' (piano) below the staff.

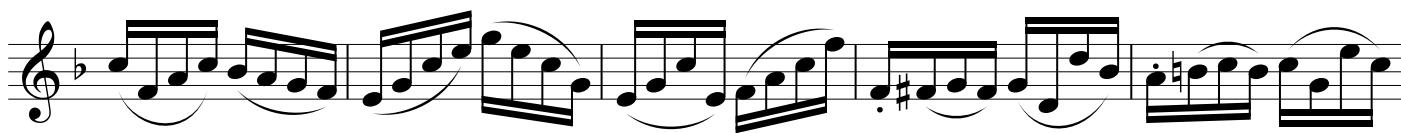
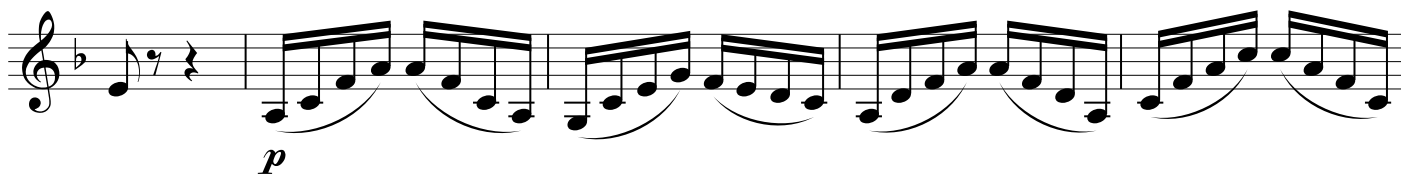
[illegible]

II. *Andante*
con sordino

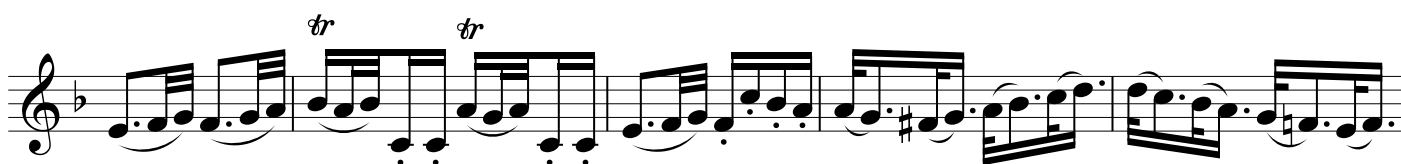
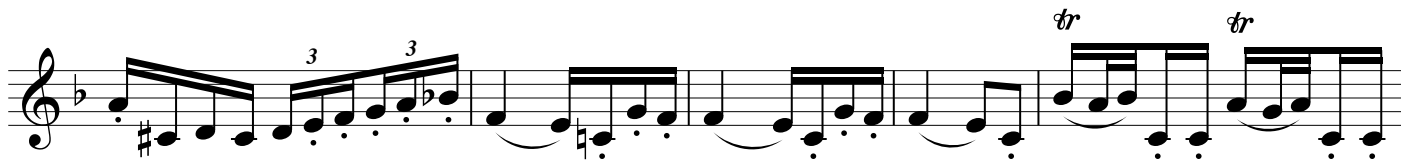
p



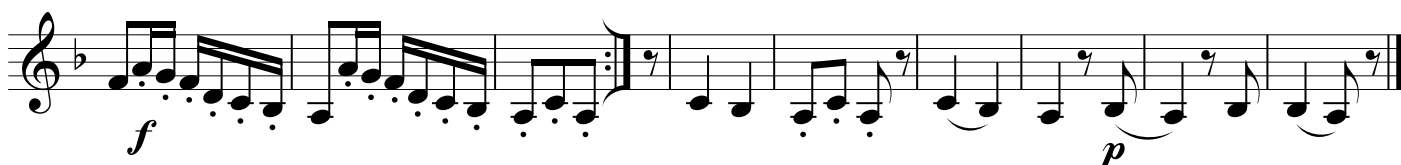
3



4

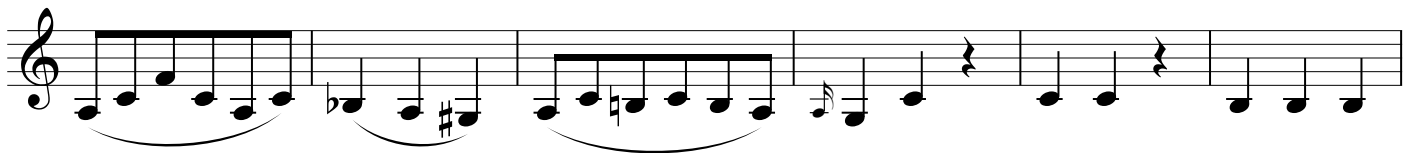


5



MENUETTO

Allegretto

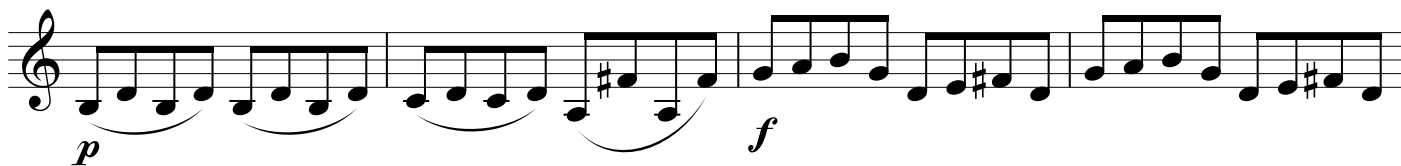
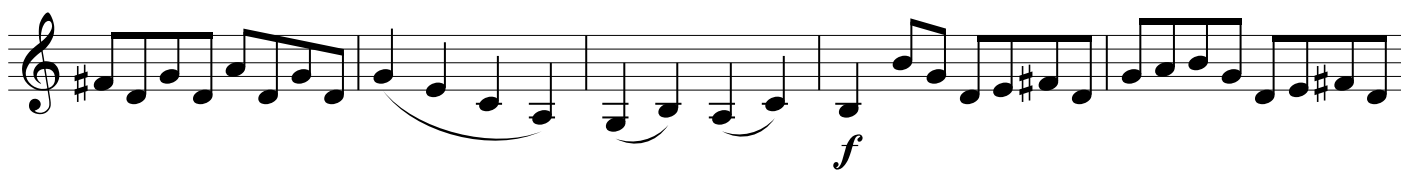
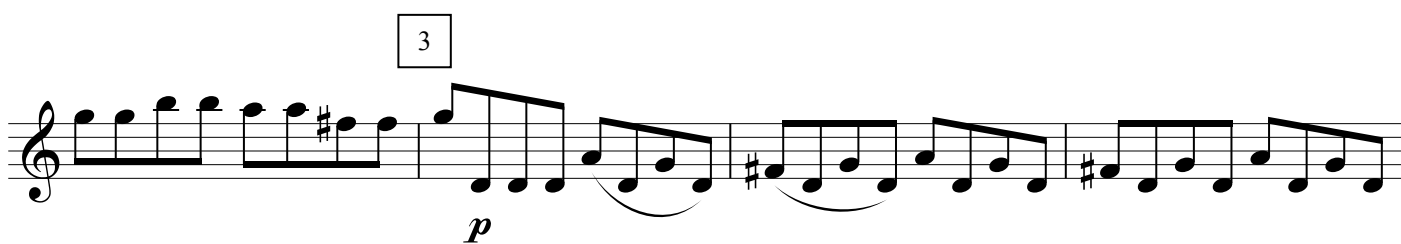
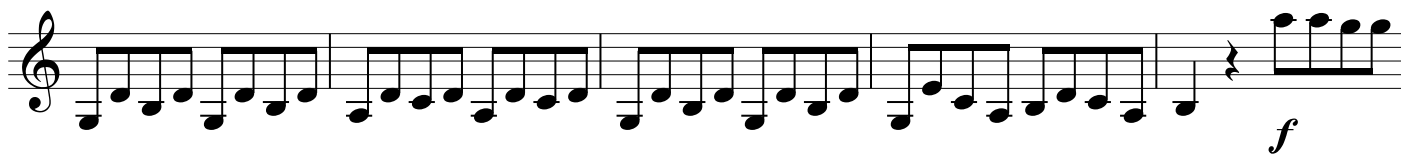




D.C. al Menuetto

Presto





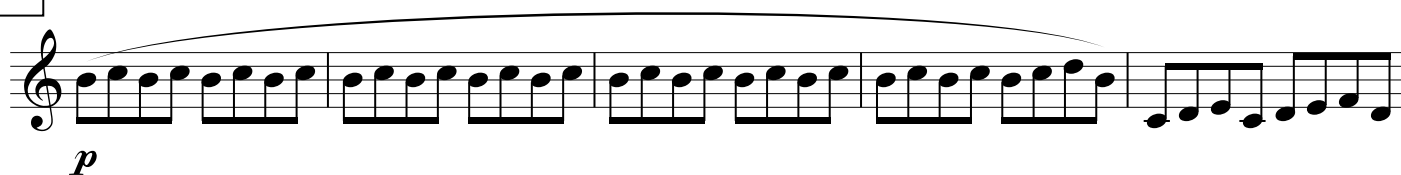
4



5



6



7



8



9

