


Maria 1

TRANSGENDER
EROTICA BY
REBECCA
MOLAY

SEXUALLY
EXPLICIT!
FOR ADULTS
ONLY!




ALL RIGHT, AMANDA,
TAKE THE PILLS I GAVE
YOU, AND YOU SHOULD
BE ALL RIGHT BY NEXT
WEEK.



WELL, HELLO
THERE. YOU MUST
BE MARK! WHAT
SEEMS TO BE THE
PROBLEM?



I FEEL A LITTLE
WEAK, DOCTOR.

A woman with long, curly blonde hair, wearing a dark green top and a dark skirt, stands in a medical office. She is holding a white lab coat. A man with long brown hair, wearing a dark shirt and tie, is sitting on a medical examination table. The room has large windows, a desk with a microscope, and a stool. There are anatomical charts on the wall.

LET ME GUESS:
LACK OF SELF
CONFIDENCE VIS-
A-VIS THE FAIRER
SEX, EH?

MY OH MY. THIS
ONE IS
PERFECT!






LOOK AT HIM. HE IS SO GENTLE AND FEMININE. HIS LONG HAIR AND EYE LASHES. NO WONDER THE GODDESS SENT HIM TO ME.




I AM A GOOD LISTENER YOU KNOW, AND LOVE WOMEN, BUT IT IS AS IF THEY DON'T SEE ME AS A MAN.



A woman with voluminous, curly blonde hair and dark eye makeup is wearing a dark green, low-cut, form-fitting dress. She is looking down and slightly to the right. A man with dark hair, a black earring, and a dark suit with a striped tie is looking at her. He has his hand near her head. The background shows a medical or laboratory setting with a desk, a skeleton model, and a window. A speech bubble is above the man's head.

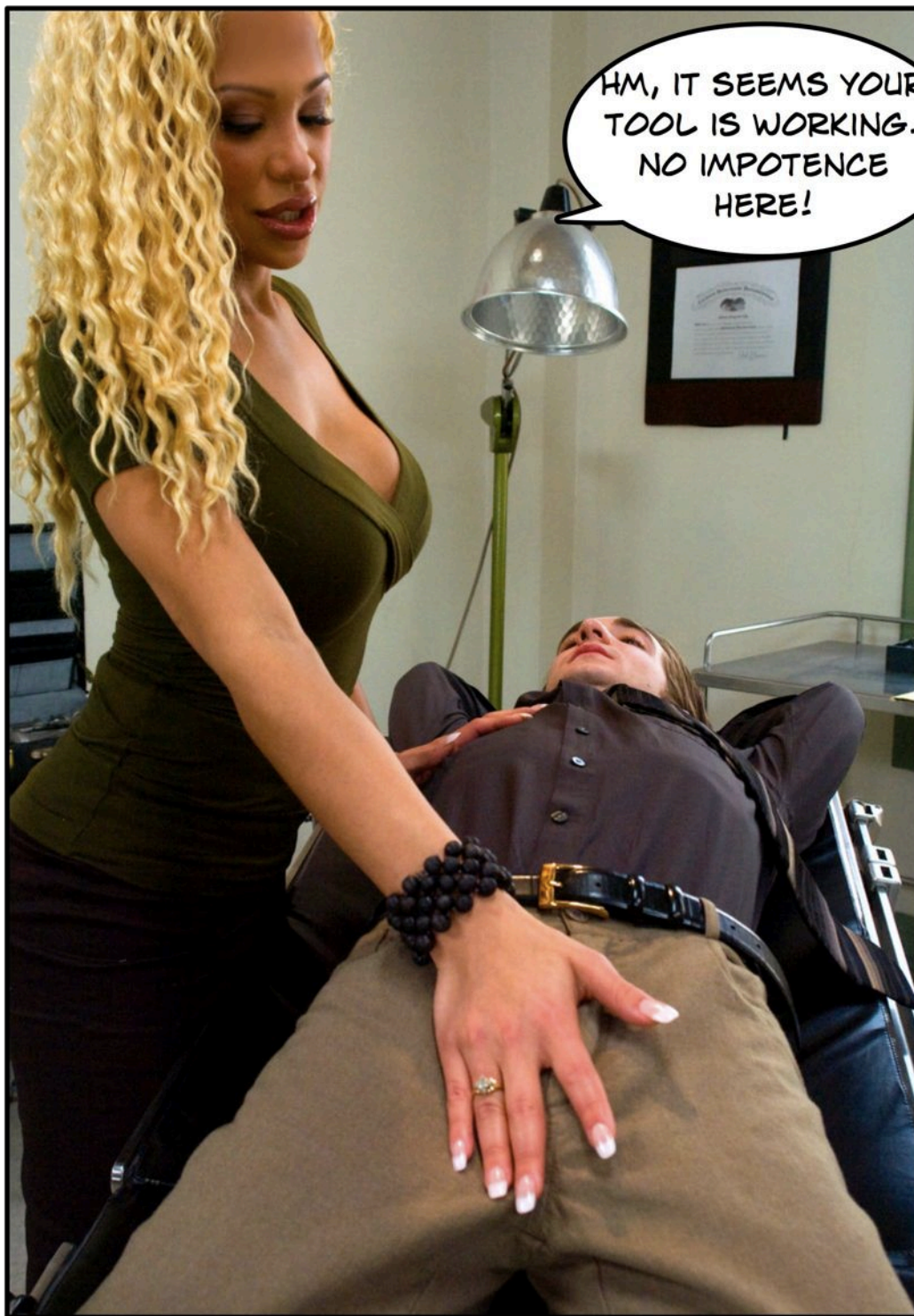
OH I CAN ASSURE
YOU THERE ARE
WOMEN OUT THERE
THAT LOVE THE KIND
ONES!





WHY DON'T YOU
LIE DOWN,
MARKS, SO THAT
I CAN EXCAMINE
YOU?

BUT ISN'T THIS A
GYNAECOLOGY
CHAIR?





I HAVE THE RIGHT
THERAPY FOR YOU!

HE HAS A STRONG
INNER WOMAN THIS
ONE, BUT THERE IS
ENOUGH MALE ENERGY
LEFT IN HIM FOR ME TO
FEAST ON.









○

OH THIS IS SO
GOOD. I CAN FEEL
HIS MASCULINE
ENERGIES FILL MY
SPIRIT. IT HAS BEEN
TOO LONG SINCE I
HAD THE CHANCE TO
HAVE A FEAST LIKE
THIS.





COME
HERE, BOY!

THE MILK SHOULD
HAVE WEAKENED HIM
ENOUGH NOW.













I HAVE TO OBEY
HER. I WANT
TO, I THINK.

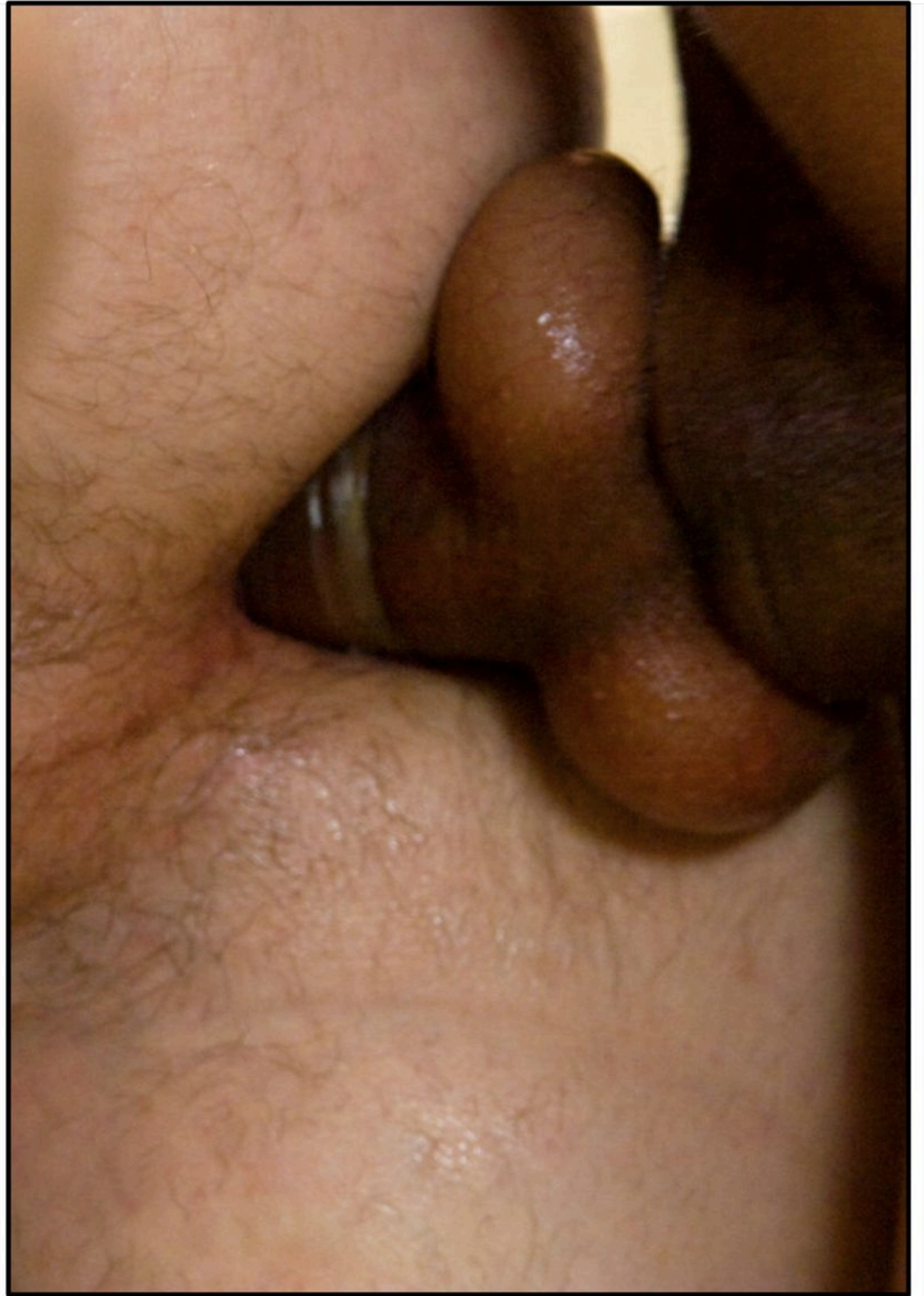
TURN OVER, MARK, IT
IS TIME FOR YOU
REAR END
EXAMINATION.

YOU HAVE A TIGHT
LITTLE ASS, MARK.
GIRLS LIKE THAT.

BUT JUST YOU
WAIT TIL IT
STARTS TO
GROW....



YOU REALLY DON'T NEED
THIS WERE YOU ARE GOING






OUGH....

LIE
STILL,
MARK!



A woman with long, curly blonde hair and large black hoop earrings is leaning over a man. The man is lying on a dark, padded surface, possibly a table or bed, with his eyes closed and a pained expression. The woman is looking down at him with a determined or intense expression. The background shows a room with metal frames and light-colored curtains.

SAY GOODBYE TO YOUR
MALE LIFE, MARK. AS
SOON AS I SHOOT MY
LOAD INSIDE YOU, THERE
IS NO TURNING BACK!

WHEN MARK FELT
LILITH'S CUM FILL
HIS ASS, IT WAS
AS IF ALL HIS
STRENGTH LEFT
HIM. HE FAINTED
AS A SMALL DRIP
OF CUM LEAKED
OUT OF HIS DICK.

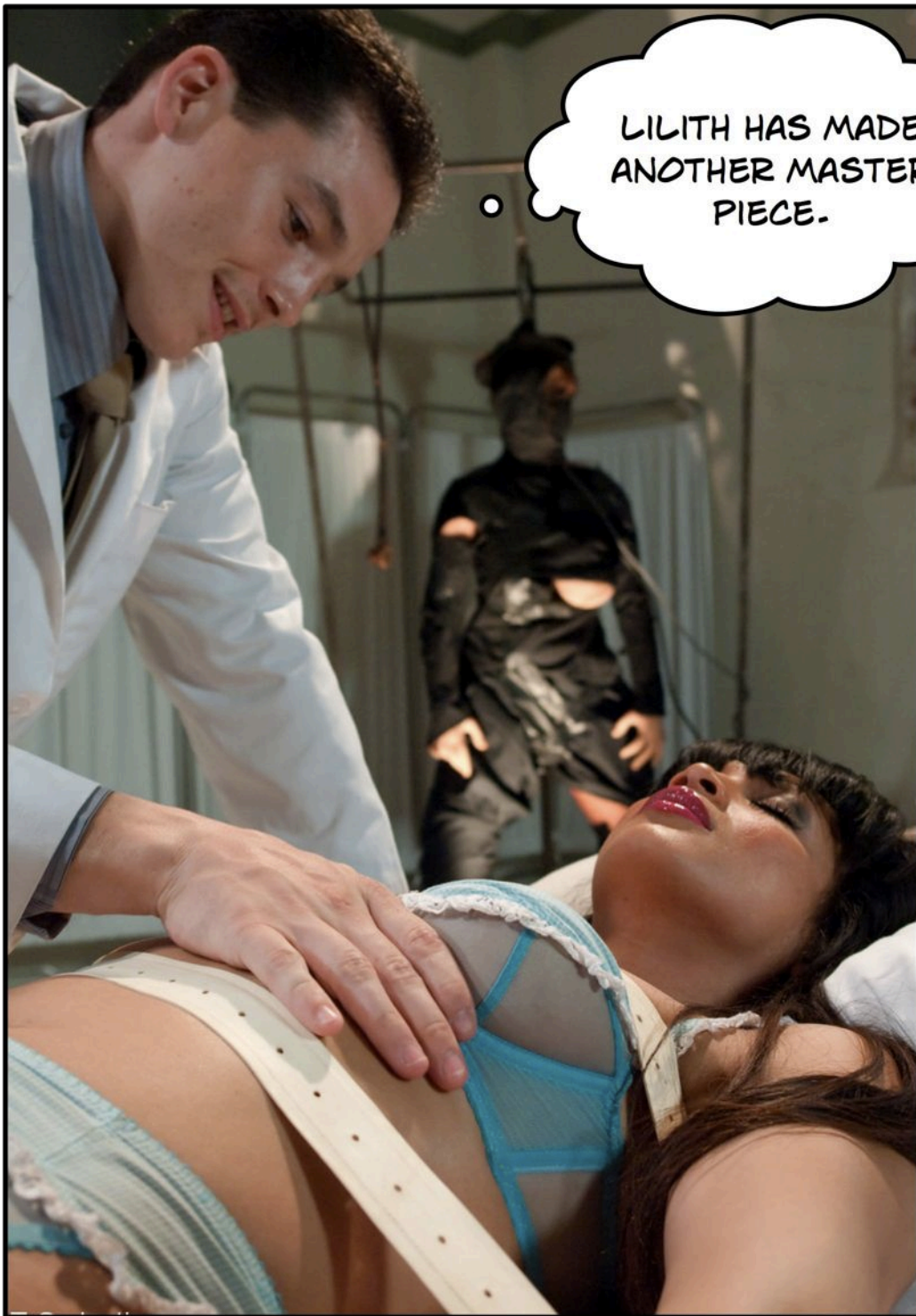


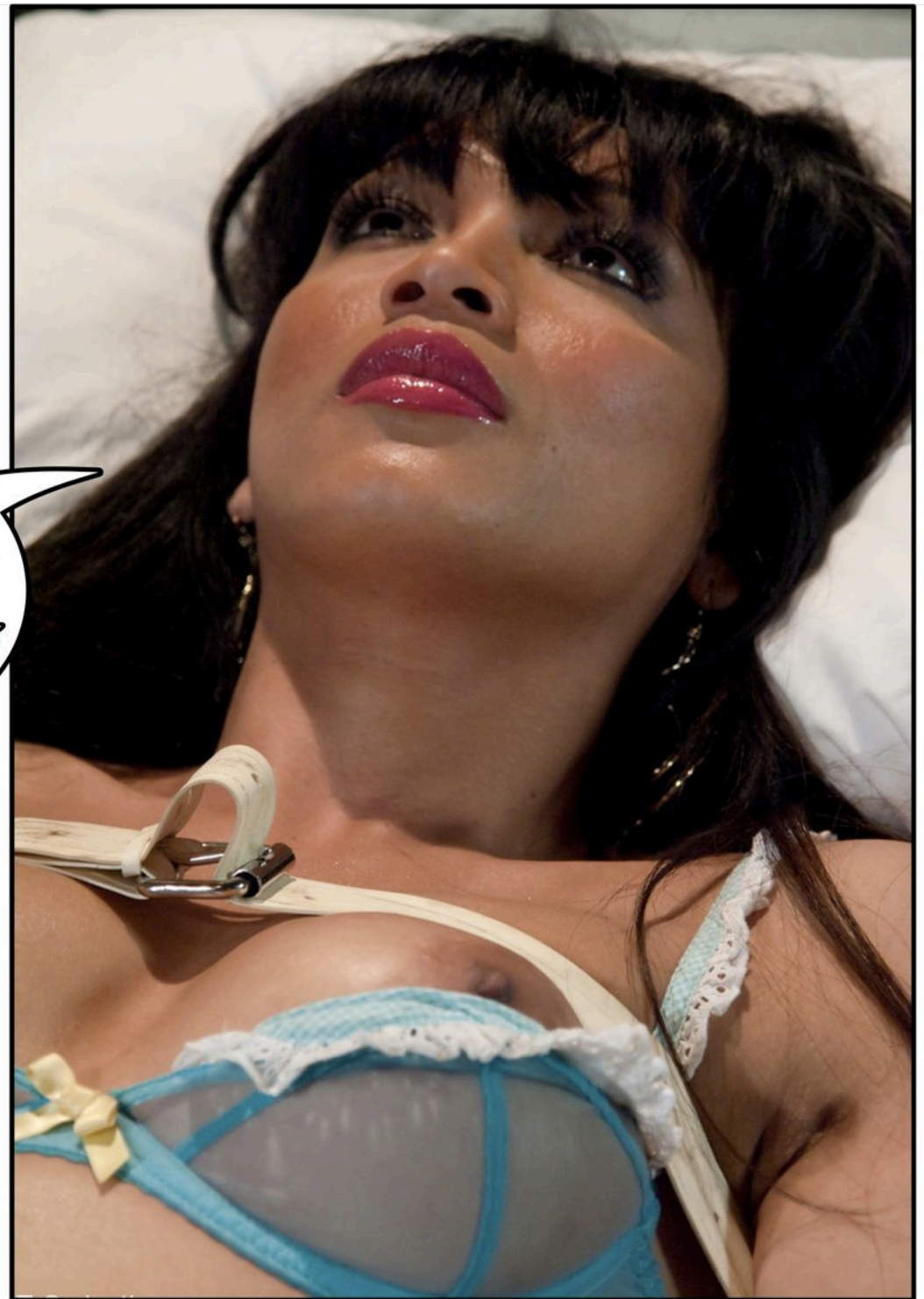
12 HOURS LATER
IN THE LOCAL
CHAPTER OF THE
SISTERHOOD OF
INANNA.

THE TESTS LOOK
GOOD. THE
TRANSFORMATION
IS PROGRESSING
RAPIDLY.

IT IS TIME
TO WAKE
HER UP, I
THINK.

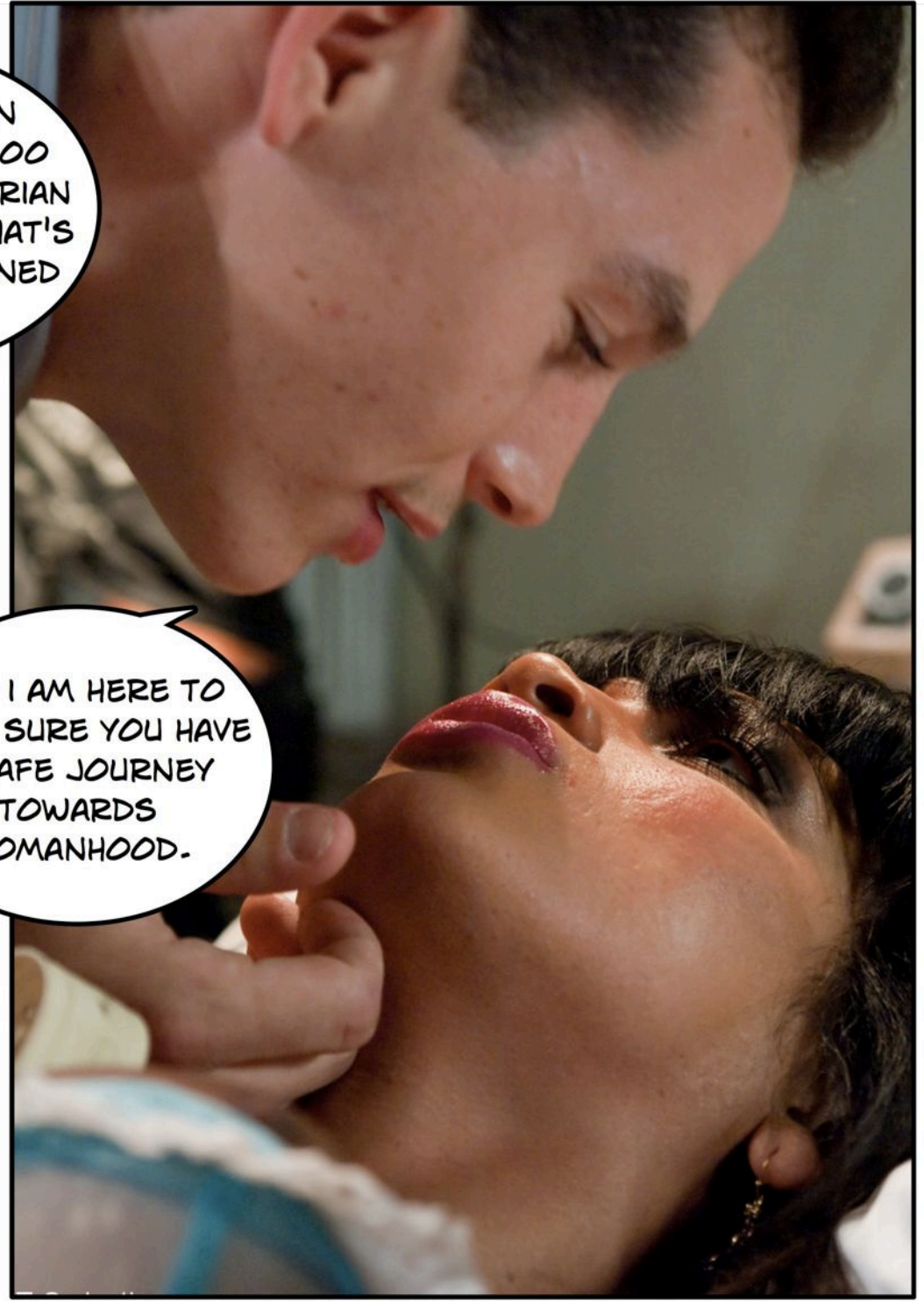









YOU HAVE BEEN
FUCKED BY A 6000
YEARS OLD SUMERIAN
LILITU DEMON. THAT'S
WHAT HAS HAPPENED
TO YOU.



AND I AM HERE TO
MAKE SURE YOU HAVE
A SAFE JOURNEY
TOWARDS
WOMANHOOD.



CAN YOU FEEL
THIS? THESE ARE
YOUR TITS. AND
THEY ARE STILL
GROWING.

IT CAN'T BE! TELL ME
THIS IS A DREAM!





YOU HAVE BEEN
TRANSFORMED BY
A DEMON, MARK.
THERE IS NO WAY
TO STOP THIS.

MY NIPPLES
ARE HARD!



I CAN'T HELP
MYSELF. I FEEL SO
EMPTY. I NEED IT.



YOU WILL BE
A PERFECT
COURTESAN
THE WAY YOU
SUCK COCK!



















AS MARK STARTED
TO FUCK THE
DOCTOR, HE
COULD FEEL HIS
DICK SLOWLY
SHRINKING.



AS IT SHRUNK IT
BECAME HARDER
TO THRUST.



AND WHEN HE
FINALLY CAME
INSIDE HIM, IT
WAS JUST A
WEAK SIZZLE OF
SEMEN. TEARS
RUN DOWN
MARK'S CHEEKS
AS HE REALIZED
THAT IT WAS ALL
BUT GONE. THE
ONLY DICK HE
COULD SEE NOW
WAS THE ONE
THAT BELONGED
TO THE DOCTOR.



ONE WEEK LATER

WOULD THE NOVICES
PLEASE CIRCLE ME!





I WELCOME YOU TO
THE HOLY CIRCLE OF
INANNA'S CHILDREN!






I SEE THAT LILITH
HAS BEEN QUITE
BUSY LATELY.

INDEED SHE HAS,
ALTHOUGH SOME OF
THESE GIRLS WERE
CHANGED BY COY
O.T.




WELL, YES, HE HAS
A MORE GENTLE
APPROACH NOW,
HASN'T HE?

A group of people are gathered in a dimly lit room with a red carpet. Several individuals are wearing black robes and hoods, some kneeling. One person on the right is wearing a red robe and a hood. A speech bubble from the person in the red robe contains the text: "YOU WILL NOW LEAVE YOUR OLD LIFE BEHIND YOU AND TAKE ON A NEW LIFE AND A NEW NAME!". The room has arched doorways and warm lighting.

YOU WILL NOW LEAVE YOUR
OLD LIFE BEHIND YOU AND
TAKE ON A NEW LIFE AND A
NEW NAME!

MARK FELT A
STRANGE
SENSATION. IT
WAS AS IF HIS ASS
WAS GROWING. HIS
TITS WERE
GETTING HEAVIER.

A photograph of a masquerade event in a dimly lit, ornate room. Several women are kneeling on a red carpet, wearing elaborate masks and costumes. In the background, other guests are visible, some standing and some seated. A large, ornate chandelier hangs from the ceiling. A speech bubble is overlaid on the right side of the image, containing the text: "LISTEN TO YOUR INNER VOICE. WHAT IS THE NAME THAT SINGS AT THE BACK OF YOUR MIND?".

LISTEN TO YOUR INNER
VOICE. WHAT IS THE NAME
THAT SINGS AT THE BACK
OF YOUR MIND?



COURTNEY

ALEXIA


ANNA

EDITH

FAITH

MARIA

ERIN




YOU ARE NAKED AS THE DAY
YOU WERE BORN. YOU ARE
NOW REBORN AS THE
SISTERS OF THE GODDESS
OF INANNA!

IF YOU ARE LOYAL YOUR
GODDESS WILL REWARD
YOU WITH A RICH AND
HAPPY LIFE. TREASON
WILL BE PUNISHED
SEVERLY.



IT IS TIME
FOR THE
FINAL
SACRIFICE!



A photograph of a woman in a gold mask and black lingerie standing in a dimly lit room. In the foreground, a large, out-of-focus figure in a red garment is partially visible. In the background, several other people are standing, some wearing black hoods. A speech bubble is overlaid on the right side of the image.

YOU ARE NOW ALL
FULL BLOODED
WOMEN WITH ALL
THE OUTWARD SIGNS
OF HOLY
WOMANHOOD. TODAY
OUR MALE SERVANTS
WILL INITIATE YOU
INTO THE HOLY
MYSTERIES OF THE
GODDESS!



AH, AH, AH!









THE PICTURES OF THE T-GIRL MODELS JESSICA AND
YASMINE LEE ARE FROM

TSSSEDUCTION.COM

MARIA IS PLAYED BY LISA ANN OF

BRAZZERS.COM

FOR MORE TRANSGENDER EROTICA VISIT

REBECCAMOLAY.COM