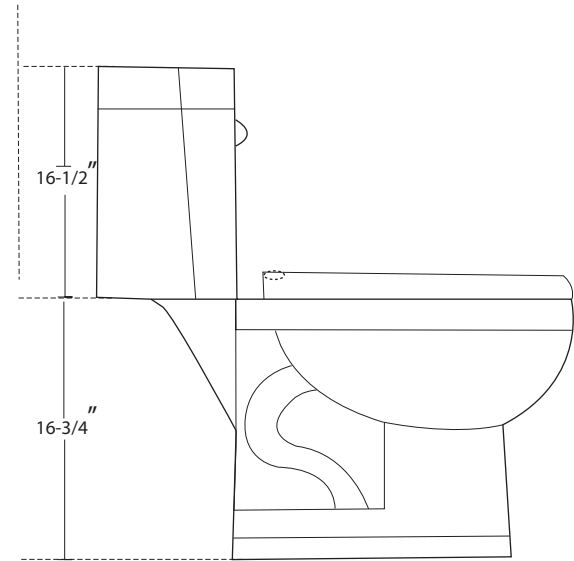
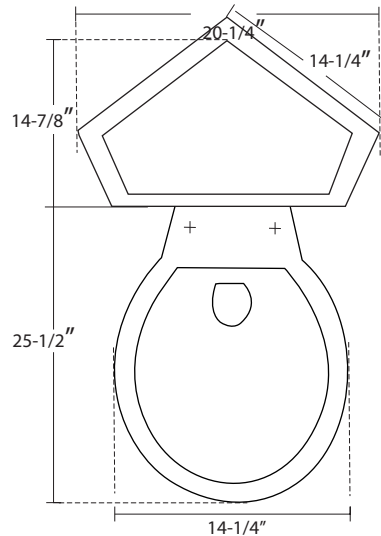


## Seneca Dual-Flush Two-Piece Corner Toilet (Elongated)

**SKU #:150074**



### Overall Dimensions:

Length: 20-1/4"

Width: 40 3/8"

Height: 33 1/4"

### Interior Dimensions:

Rough In: 12"

Dual Flush: 1.05/1.2 GPF

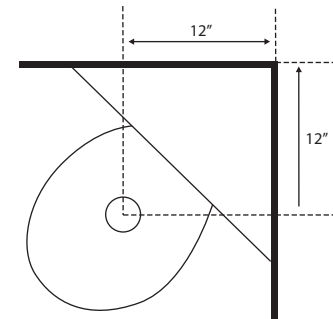
Bowl Height: 16-3/4"

Footprint: 20" x 11-3/4"

Rough In:

1. To determine the rough-in location for your corner toilet measure and mark the rough-in length (12" for this example) out from the finished corner on each wall. (See image)
2. Use a straight edge to draw two perpendicular lines from the marks created in the previous step. The intersection of these lines will mark the rough-in location.

Rough In:



Compliance Certification  
Meets or exceeds the following  
specifications: ASME A112.19.2  
2013 and CSA B45.1-13 for  
ceramic plumbing fixtures.