

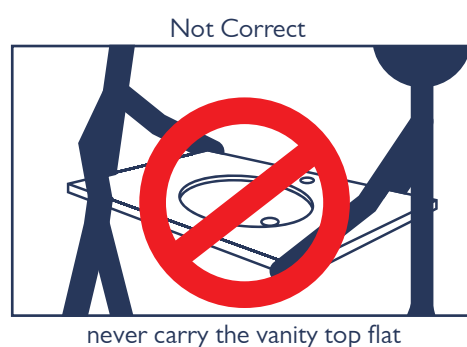
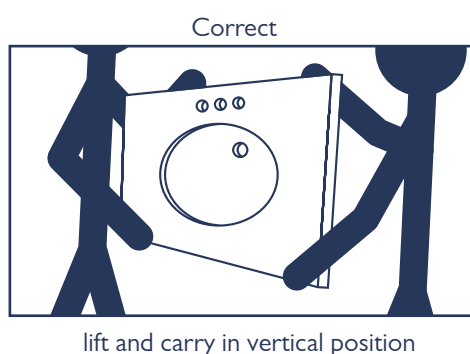
Vessel and Undermount Vanity Top Installation

Tools Needed:

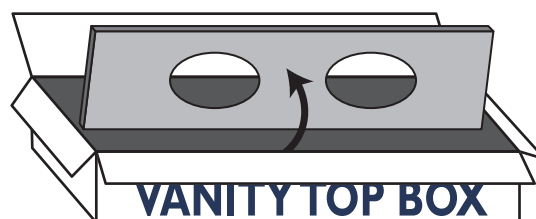
- 100% Silicone Sealant
- Flat Head Screwdriver (or 3/4-inch or Smaller Chisel)
- Damp Towel
- Soft Surface

CAUTION:

Certain vanity tops are extremely fragile and may break if not handled properly. Only turn the vanity top or backsplash to a horizontal position when you are preparing to install it on the vanity cabinet.



IMPORTANT: When opening vanity top box, make sure to turn the top into a vertical position before lifting out of the box.



BEFORE INSTALLATION: Please inspect your vanity top thoroughly to ensure there are no damages or defects **PRIOR** to installation. Warranty **DOES NOT** cover removal, installation or labor costs.

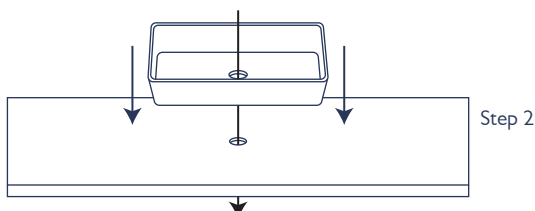
Preparation

Make sure your vanity cabinet is level and secured to your wall. “Frameless” design vanities require additional support. Please refer to your cabinets manufacturer’s instructions for installation and additional support details.

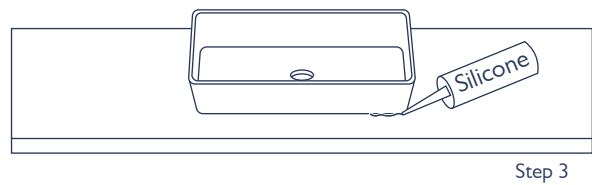
Vessel Sink Installation

1. Place your vessel sink upside down on a soft surface. Apply a generous amount of your 100% silicone sealant on the bottom on the vessel sink where it will sit on the vanity top.

2. Flip the vessel sink over and align over the drain hole in the vanity top.



3. **Optional:** Apply a bead of 100% silicone sealant around the base of the vessel sink for additional support.



4. Remove excess sealant with a damp cloth.

5. Let the vanity dry for a minimum of 24 hours. Once completely dry, move on to faucet installation.

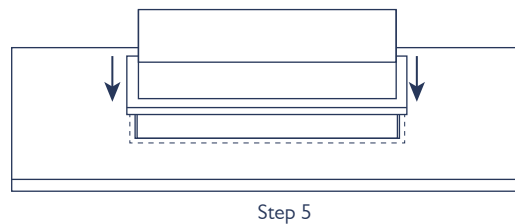
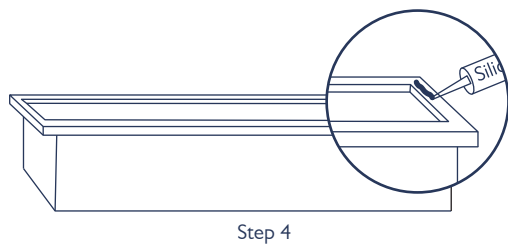
Undermount Sink Vanity Top Installation

1. Rest your vanity top bottom-side up on a soft surface.

2. Align your undermount sink with the cutout on the vanity top. Make sure sink is aligned with faucet hole and evenly spaced between bolt holes.

3. Pencil an outline of the perimeter of your undermount sink on bottom side of vanity top.

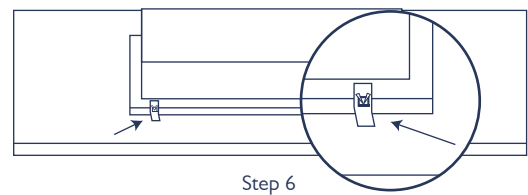
4. Remove undermount sink from your vanity top and apply a thin bead of silicone sealant around the top edge of the sink.



5. Place your sink upside down on the bottom side of the vanity top. Once you have it positioned on the outline you made, press down firmly.

6. At each of the bolt holes in the vanity top, attach sink clips by placing the long end of the clips flat on the sink lip.

Screw the wing bolts through the brackets and bolt holes and tighten.



7. Carefully, turn over the vanity top. If you need to reposition the sink, slightly loosen the wing bolts and adjust as needed. Wipe away excess sealant with your damp towel and allow silicone sealant to dry.

8. **Make sure to remove old adhesive if you are using an existing vanity for this installation.**

9. Create a line of silicone sealant around the top edge of the vanity cabinet .

10. **This step requires help from a second person.** Carefully move the vanity top onto the vanity cabinet. Press firmly on the vanity top and wipe away excess silicone sealant with your damp towel.

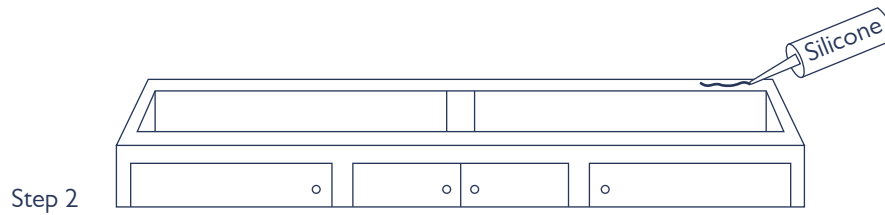
11. **Side/Back-splash installation.** Apply a generous amount of silicone sealant to the side/back-splash and firmly press it against your bathroom wall. Fill any remaining gaps with silicone sealant and wipe away excess sealant with your damp towel.

12. Let sit for a minimum of 24 hours. Continue with faucet installation once completely dry.

Note. For marble and granite tops, we recommend applying stone sealer to keep your new vanity top from staining and discoloration. Refer to your stone sealer manufacturer for amount of time between applications.

Vanity Top Installation

1. **Make sure to remove old adhesive if you are using an existing vanity for this installation.**
2. Create a line of silicone sealant around the top edge of the vanity cabinet.



3. **This step requires help from a second person.** Carefully move the vanity top onto the vanity cabinet. Press firmly on the vanity top and wipe away excess silicone sealant with your damp towel.
4. **Side/Back-splash installation.** Apply a generous amount of silicone sealant to the side/back-splash and firmly press it against your bathroom wall. Fill any remaining gaps with silicone sealant and wipe away excess sealant with your damp towel.
5. Let sit for a minimum of 24 hours. Continue with faucet installation once completely dry.

Note. For marble and granite tops, we recommend applying stone sealer to keep your new vanity top from staining and discoloration. Refer to your stone sealer manufacturer for amount of time between applications.

Pre-Drilled Faucet Holes

Vessel: Your vanity top has pre-drilled faucet holes. The partially pre-drilled holes are labeled on the vanity top with stickers. You have 3 faucet hole options when installing a vessel sink. Determine which faucet hole option you want and knock out as follows;

Undermount: Your vanity top has pre-drilled faucet holes. The partially pre-drilled holes are labeled on the vanity top with stickers. 5 faucet hole options allows the use of a single hole, 4" centerset, or 8" widespread faucets. Determine which faucet holes you need to remove according to your faucet and knock out as follows;

- Place a flat head screwdriver or a 3/4-inch (or smaller) on the center "X" and tap with a hammer to remove the granite section.
- Clean away any rough edges, with the tool of your choice, and verify that your faucet supply lines fit through the hole. Wall mount faucets do not require you to knock out any of the partially pre-drilled holes.

Question about your new vanity top? Before returning please reach out to our customer service email at support@magnushomeproducts.com