

INNOVATIONS IN SUPPORTING FAMILIES COMMUNITY OF PRACTICE FRAMEWORK FOR SYSTEMS CHANGE WEBINAR SERIES

**LifeCourse Tools
in Action:
A Good life For All
in Oklahoma**



NASDDDS

UMKC
INSTITUTE FOR HUMAN DEVELOPMENT
A University Center for Excellence in Developmental Disabilities (UCEDD)

HSRI





SUPPORTING FAMILIES

of individuals with intellectual & developmental disabilities

THE NATIONAL COMMUNITY OF PRACTICE • FUNDED BY THE ADMINISTRATION ON INTELLECTUAL & DEVELOPMENTAL DISABILITIES

Project Goal

To build capacity through a community of practice across and within States to create policies, practices and systems to better assist and support families than include a member with I/DD across the lifespan.

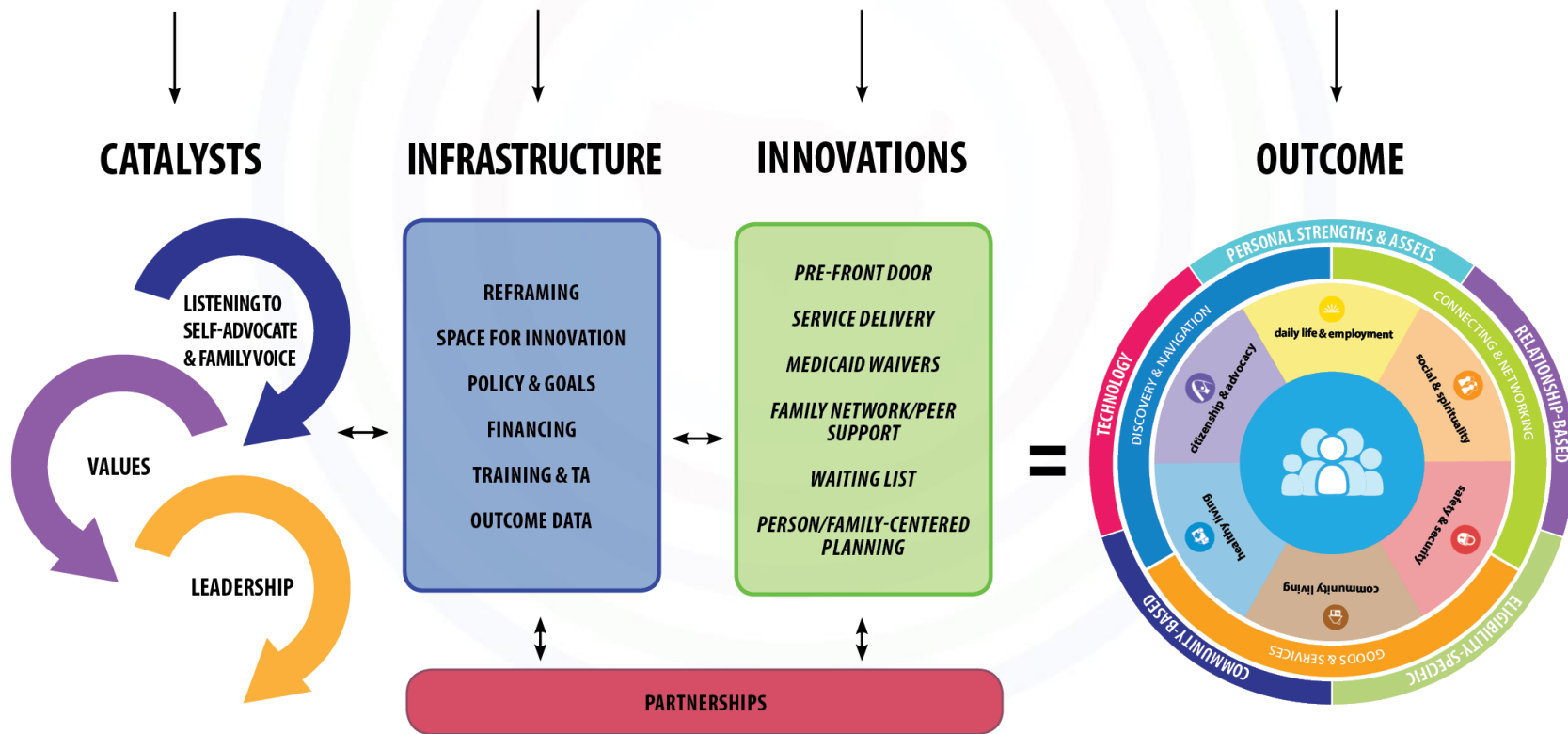


ADMINISTRATION ON
INTELLECTUAL AND
DEVELOPMENTAL
DISABILITIES



National CoP for Supporting Families Framework for Systems Change

Life Course Guiding Principles



Michelle "Sheli" Reynolds, PhD. UMKC Institute for Human Development, UCEDD. Revised June 2014. Adapted from Hall et al, 2007





The LifeCourse Framework

Introduction

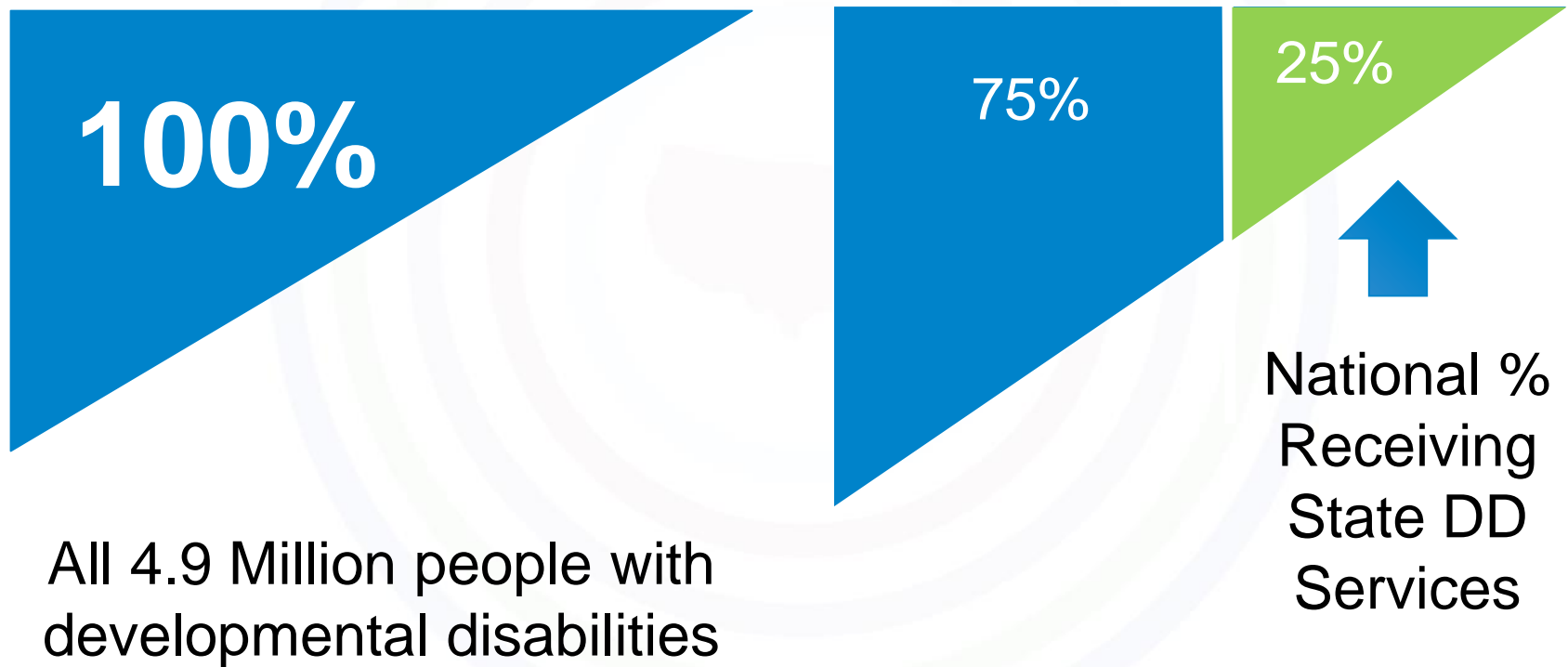




All people
have the right to live,
love, work, play and
pursue their dreams
in their community.



Focus on “ALL”



*** Based on national definition of developmental disability with a prevalence rate of 1.49%*



LifeCourse Framework



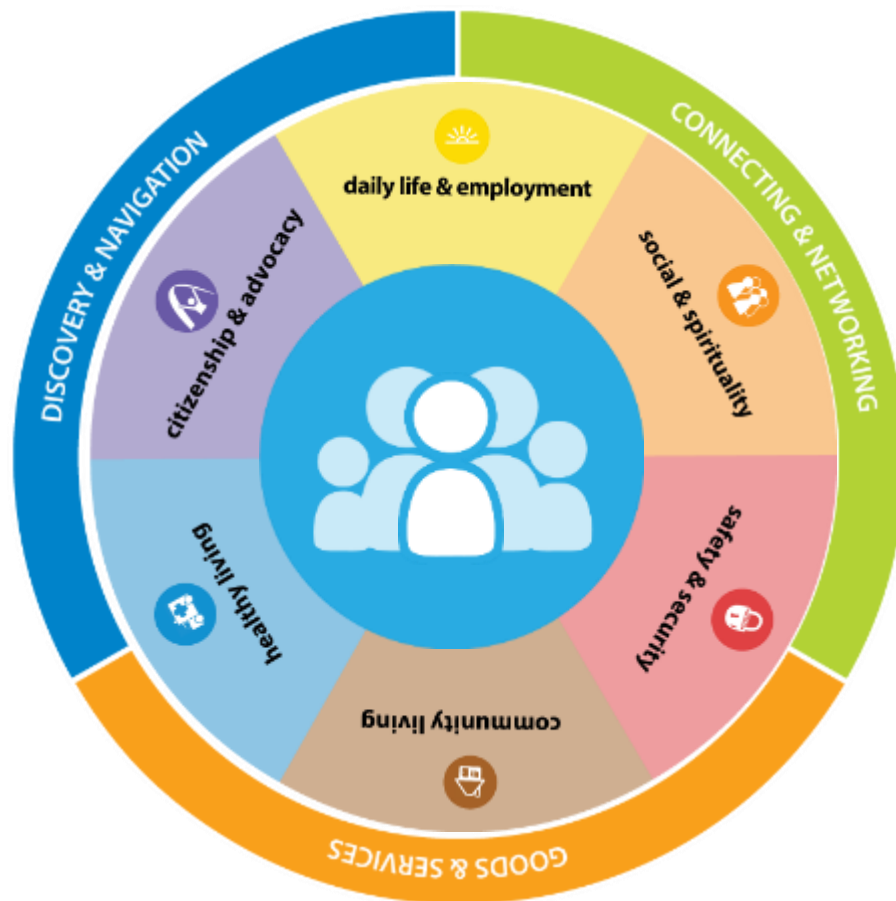
LifeCourse Framework



LifeCourse Framework



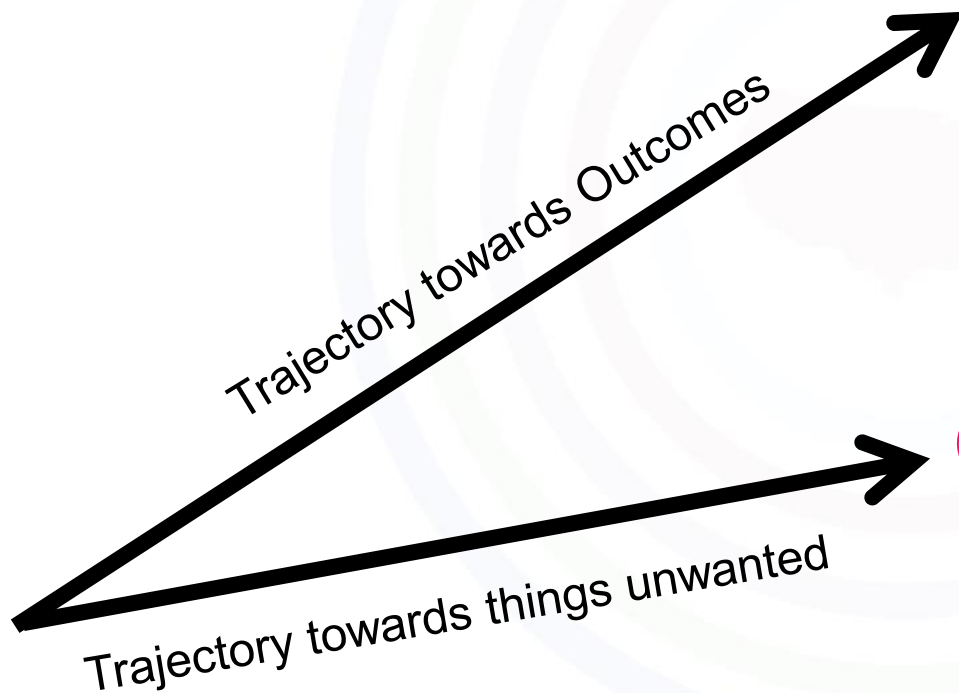
LifeCourse Framework



LifeCourse Framework



Trajectory towards Life Outcomes



Friends, family, self-determination, community living, social capital and economic sufficiency

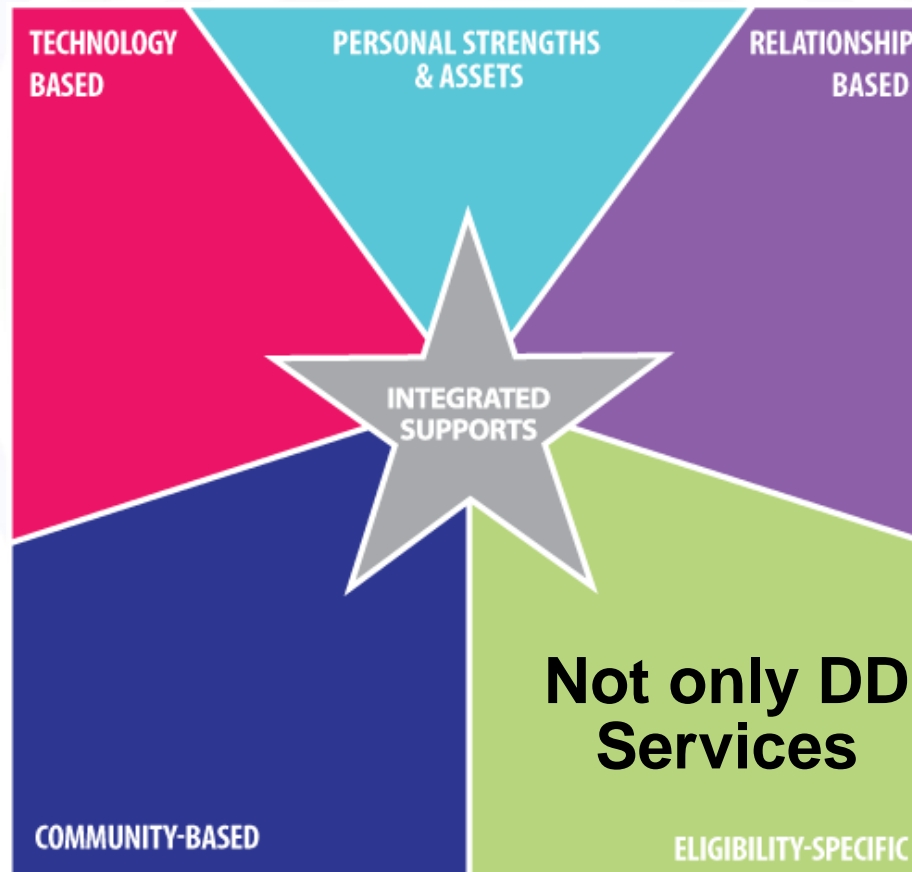
Vision of What I Don't Want



Both in practice with individuals and in policy changes for systems



Identifying Integrated Strategies for Delivery of Supports



Outcomes for Today's Webinar

1. Understand the principles of the LifeCourse framework,
2. See concrete examples of how the LifeCourse framework and tools are being used by individuals and families as well as professionals to solve problems, troubleshoot life, and plan for the future, and
3. Hear how the Oklahoma Community of Practice team is reframing the conversation regarding people with developmental disabilities and their families and maximizing partnerships and opportunities to affect systems change for families in their state.





A Good Life for All in Oklahoma





LIFECOURSE IN ACTION:

A Good Life for All in Oklahoma



A University Center for Excellence
in Developmental Disabilities
University of Oklahoma Health Sciences Center

Angela Donley, Oklahoma Family Network
Wanda Felty, Center for Learning &
Leadership/UCEDD, OUHSC
July 28, 2016



All Means All



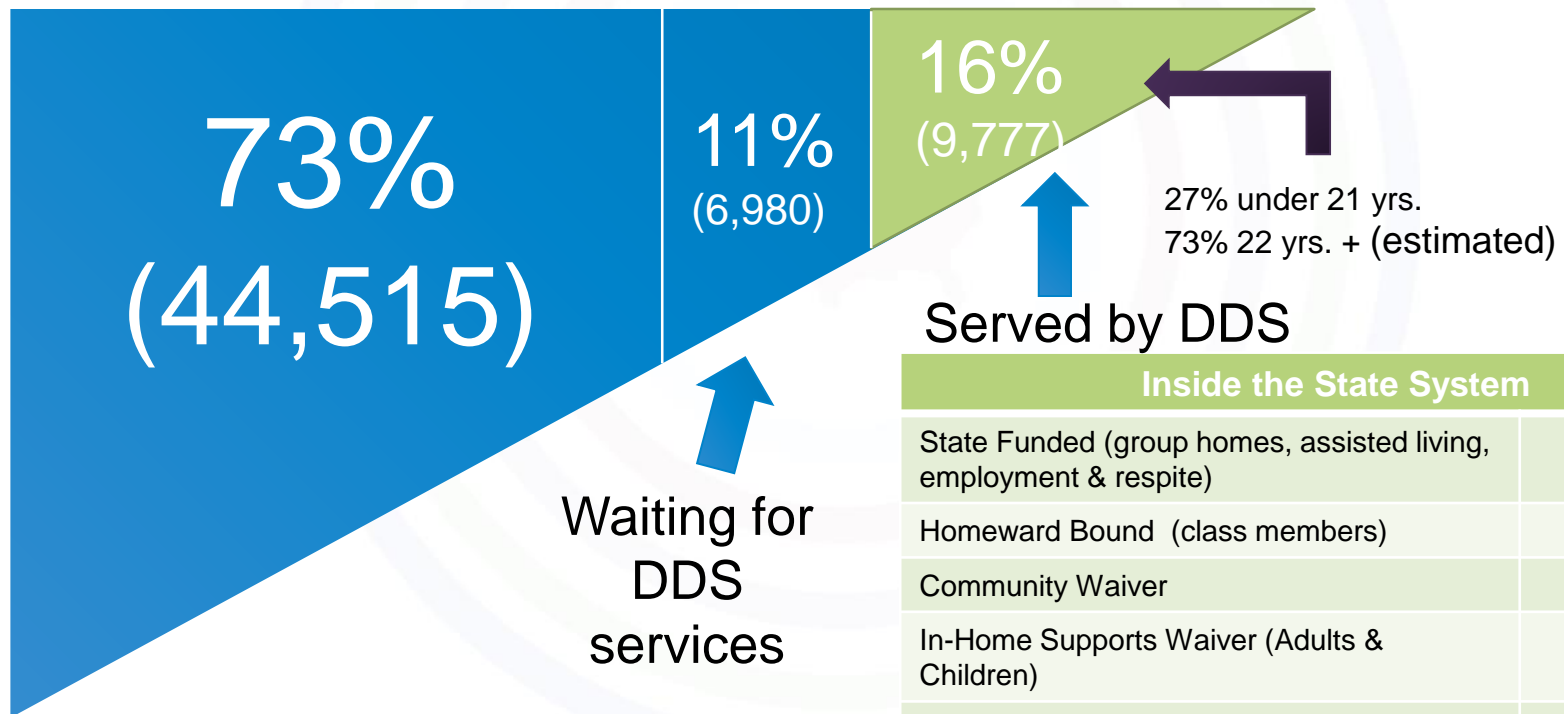
Today's Focus

- Changing the conversation regarding people with developmental disabilities and their families
- Partnering with individuals and families as well as community resources to increase the volume of the message
- Leading strategically by maximizing partnerships, seizing key opportunities and navigating political landscapes



Changing the Conversation

Focus on the All



*Based on 1.58% prevalence of 3.878 citizens US Census (2014)



| Ages | Ages and years Waiting | | | | | | | | Services Provided to those on Request List by Age | | | | | | | | | | No services | |
|-------|------------------------|--------------|--------------|--------------|--------------|--------------|--------------|-------|---|-----|-----|-------|-----|----------|-------|-------|------|-----|-------------|-------|
| | Less than 1 year | 1 to 2 years | 2 to 3 years | 3 to 4 years | 4 to 5 years | 5 to 6 years | over 6 years | Total | AL | CIE | ADC | FSS | GH | Medicaid | TEFRA | SNAP | Obra | SW | | SSI |
| 0-3 | 61 | 40 | 32 | 9 | - | - | - | 142 | - | - | - | 51 | - | 94 | 20 | 47 | - | - | 58 | 28 |
| 4-6 | 52 | 74 | 77 | 81 | 45 | 29 | 16 | 374 | - | - | - | 151 | - | 269 | 40 | 122 | - | - | 188 | 75 |
| 7-18 | 221 | 264 | 284 | 272 | 176 | 251 | 1,207 | 2,675 | - | 2 | - | 809 | 2 | 1,795 | 185 | 783 | - | 2 | 1,332 | 645 |
| 19-21 | 50 | 83 | 85 | 80 | 60 | 81 | 323 | 762 | 1 | 30 | - | - | 8 | 455 | 2 | 206 | 2 | 54 | 372 | 218 |
| 22-35 | 60 | 111 | 133 | 194 | 160 | 207 | 1,359 | 2,224 | 4 | 139 | - | - | 35 | 1,369 | - | 819 | 9 | 161 | 1,033 | 597 |
| 36-55 | 39 | 67 | 64 | 107 | 67 | 60 | 400 | 804 | 11 | 59 | 2 | - | 35 | 502 | - | 254 | 22 | 93 | 245 | 210 |
| 56-64 | 8 | 15 | 15 | 33 | 10 | 11 | 106 | 198 | 5 | 9 | 1 | - | 14 | 119 | - | 38 | 11 | 28 | 45 | 54 |
| 65-74 | 3 | 4 | 5 | 10 | 3 | 3 | 40 | 68 | 5 | 2 | - | - | 6 | 51 | - | 11 | 7 | 7 | 21 | 9 |
| 75 | - | - | - | 1 | - | - | 1 | 2 | - | - | - | - | - | 1 | - | 1 | 1 | - | 1 | - |
| 76-77 | - | 1 | - | - | - | - | 1 | 2 | - | - | - | - | - | 1 | - | 1 | - | - | 1 | 1 |
| 78 | - | 1 | - | - | - | - | 1 | 2 | - | - | - | - | - | - | - | - | - | - | - | 2 |
| 86 | - | - | - | - | - | - | 1 | 1 | - | - | - | - | - | 1 | - | 1 | - | - | 1 | - |
| | 494 | 660 | 695 | 787 | 521 | 642 | 3,455 | 7,254 | 26 | 241 | 3 | 1,011 | 100 | 4,657 | 247 | 2,283 | 52 | 345 | 3,297 | 1,839 |

75 Senior Citizens Waiting

**Obra - Omnibus Budget Reconciliation Act (1987) which created Preadmission Screening and Resident Review (PASRR) for people with or suspected of having mental illness, mental retardation and related conditions who are seeking admission to or are residents of nursing facilities. It is a Preadmission Screening evaluation because the person either sought admission to a nursing home or already was a resident of a nursing home. It does not mean the person was admitted to the NF necessarily, although they may have been IF they met the need for NF services.

**As of March 8, 2016
7,311 WAITING**

Key Services Received

- AL - Assisted Living
- CIE - Community Integrated Employment
- ADC - Adult Day Care
- FSS (Family Support Subsidy) - \$250 monthly
- GH - Group Home
- Medicaid - Oklahoma SoonerCare
- TEFRA - SoonerCare for children w/severe medical needs
- SNAP - Food Assistance Program (food stamps)
- Obra (See explanation on left)
- SW - Shelter Workshop
- SSI - Supplemental Security Income

The "Services Provided" information is gathered by OKDHS. OKDHS uses their existing system along with other systems and reconcile the service recipients names with the waiting list names. It is a current as available to OKDHS.



Key Resident Type








- Res. Center
- Custody - in state custody
- OH/PH/RH - Own Home/Parents Home/Relative Home
- GH - Group Home
- FC - Foster Care
- Inc - Incarcerated
- ICF/MHF/AL/NF - ICF/MR type home
- UNK - Unknown

**As of Jan. 1, 2016
6,479 lives with family, parent's or own home**

Request List by Residence Type and Age

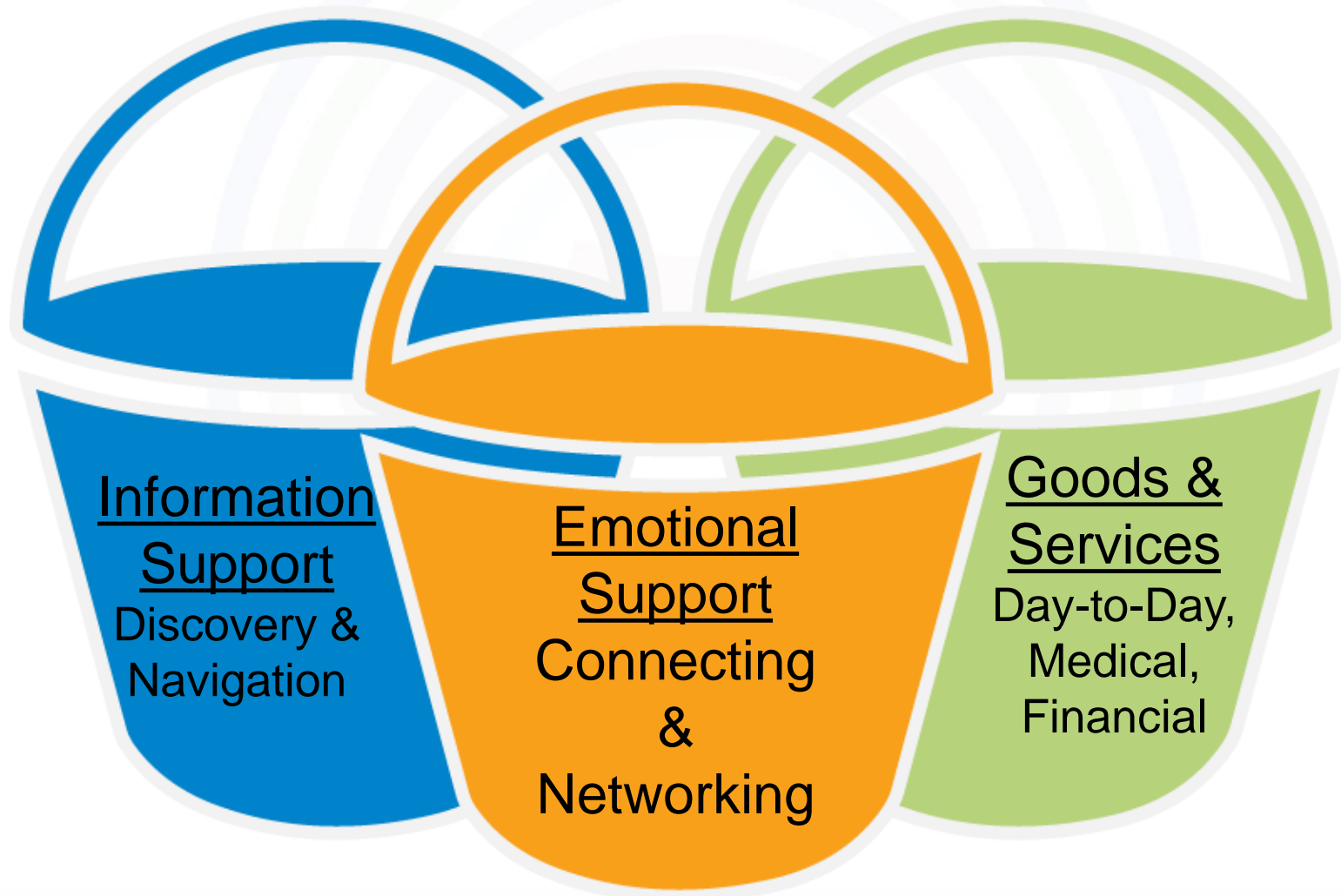
| Ages | Request List by Residence Type and Age | | | | | | | | School Age - After school and summer care needed | |
|-------|--|---------|----------|-----|----|-----|---------------|-----|---|--|
| | Greer | Custody | OH/PH/RH | GH | FC | Inc | ICF/MHF/AL/NF | UNK | | |
| 0-3 | - | 3 | 138 | - | 1 | - | - | - | After high school - working parents | |
| 4-6 | - | 17 | 349 | - | 2 | - | 1 | 5 | Aging individuals - who's supporting them now? | |
| 7-18 | - | 154 | 2,432 | 4 | 15 | 3 | 15 | 52 | Senior Citizens - Shouldn't they know they are supported? | |
| 19-21 | 4 | 6 | 704 | 7 | - | - | 6 | 35 | Printing provided by the Center for Learning and Leadership, Oklahoma's University Center for Excellence in Developmental Disabilities, through with funding from the US Administration on Intellectual and Developmental Disabilities (Grant #90DD0685). | |
| 22-35 | - | 2 | 2,003 | 34 | - | 9 | 67 | 109 | | |
| 36-55 | 2 | - | 670 | 30 | - | 7 | 60 | 35 | | |
| 56-64 | - | - | 136 | 17 | - | 2 | 33 | 10 | | |
| 65-74 | - | - | 41 | 9 | - | - | 15 | 3 | | |
| 75 | - | - | 1 | - | - | - | 1 | - | | |
| 76-77 | - | - | 2 | - | - | - | - | - | | |
| 78 | - | - | 2 | - | - | - | - | - | | |
| 86 | - | - | 1 | - | - | - | - | - | | |
| | 6 | 182 | 6,479 | 101 | 18 | 21 | 198 | 249 | | |

Waiting – Life Stages

| Life Stage | # Waiting | Medicaid | Other Serv. Including SSI | No Services |
|--|-----------|----------|---------------------------|-------------|
|  Infancy (0-3) | 142 | 94 | 114 | 28 |
|  Early Childhood (4-6) | 374 | 269 | 299 | 75 |
|  School Age (7-18) | 2,675 | 1,795 | 2,030 | 645 |
|  Transition (19-21) | 762 | 455 | 544 | 218 |
|  Young Adult (22-35) | 2,224 | 1,369 | 1,627 | 597 |
|  Midlife Adult (36-64) | 1,002 | 621 | 738 | 264 |
|  Senior Citizen (65+) | 75 | 54 | 63 | 12 |



Three Types of Supports Needed



Governor's Blue Ribbon Panel

- 2013 Executive Order to Create Blue Ribbon Panel
 - *Develop a comprehensive plan to support intellectual and developmental disabilities and their families*
 - *Address the growing DDS Waiting List*
 - *Research and analyze best practices for the comprehensive delivery of high quality services to Oklahomans with I/DD*
- Membership: Parents, Self-Advocates, Community Partners with knowledge and expertise on working with individuals with I/DD and their families



Blue Ribbon Panel “Strategies”

- Two sets of Recommendations created using “Strategies of solutions”
 - Strategy #1 – Strengthen Information Access
 - Strategy #2 – Provide resource navigation and improve inter-agency service coordination
 - Strategy #3 – Provide family-to-family support to individuals and families
 - Strategy #4 – Assess the needs of families on the Waiting List
 - Strategy #5 – Build capacity of services and supports outside the DD Services waiver



Good Life Video

**WHAT IS A
GOOD LIFE?**

<https://vimeo.com/87519027>



State Budget Crisis

- 2016 Anticipated State Budget Shortfall
Budget to all state agencies reduced FY'16
- 2016 Mid-Year Two Revenue Failures
Six months into FY 3% reduction
Eight months into FY 4% reduction
- 2017 Developmental Disability Services response to budget
Eliminate the In-Home Supports Waiver
Legislature put all DDS Funding in a Limits Bill to protect all programs for this year



Stakeholder Group aka Allies

In 2015, we expanded our stakeholder group.

We knew we were going to need allies

We wanted to generate new and innovated ideas

Stakeholders are truly Allies

Medical clinic staff

Dept. of Education

Local School District

Disability Advocacy Group

Family Support Agency

Provider Agencies

Autism Network

Aging Services

Provider Association

Hospital

Dept. of Rehabilitation

Child Welfare staff



Edmond Schools Partnership

- Parent Education Nights at a large school district
- Three nights over a three month period

First Night – Integrated Supports Star

Goal in the Star – using the star to create discussion of ideas to accomplish the goal.

Second Night – One Page Profile

Focus on the strengths and assets of their child in school

Third Night – Trajectory to a Good Life


Envisioning a Good Life for their child and how can school help accomplish that vision

Charting the GOOD LIFE

Tools for Your Child & Your Family

THE STAR CHART

- Learn about the Integrated Supports Star (Star Chart)
- Talk with parents who have used the Star Chart at school & beyond
 - Make your own Star Chart



Better lives....not just better paper.

Monday, February 29, 2016
6:00-7:30 pm

Frontier Elementary School
4901 Explorer Drive
Edmond, OK 73012


Register Online:
<https://www.surveymonkey.com/r/Z22CHR5>

Registration Deadline:
Thursday, February, 25th

Questions?
Contact Megan Moore
405-230-6680
megan.moore@edmondschools.net

RESPIRE PROVIDED IF NEEDED

A Collaborative Project:



*This session is geared towards parents & educators of children with disabilities who receive special education services



Tools for Parent Education Nights

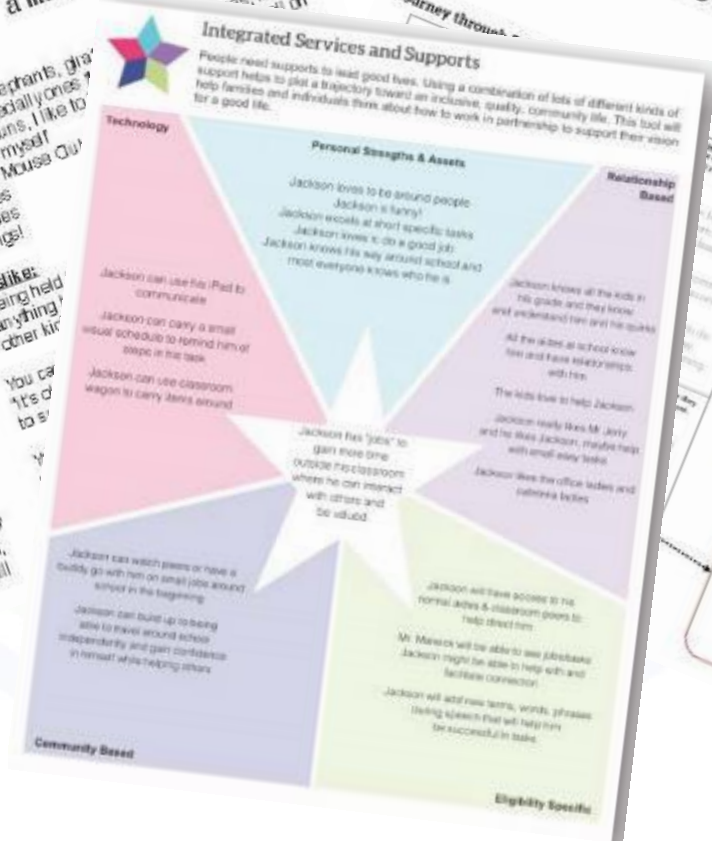


Jackson Donley
a little about me

- Like:**
- Animals (especially ones)
 - Balls, especially ones
 - Music Runs, I like to march myself
 - Mickey Mouse Club
 - Puzzles
 - Bubbles
 - Swings!
- Dislike:**
- being held
 - anything!
 - other kids

I am excited about a new school year! I do have a hard time with change and can get upset at the beginning of the year. Please don't hold the first few weeks of school against me. I know once I settle in, understand my routine and get to know you we will have a great year!

Jackson's School Trajectory



Opportunity Knocks!

- Budget Crisis to school district caused school to end student instruction three days early
- District needed to use those days as teacher training/in-service
- Full day training on LifeCourse philosophy – How teachers can use the tools for their students
 - *Tools from Parent Education Nights*
 - *Person Centered Thinking tools*
 - *Video to help teachers see students and parents vision*



A Good Job & Meaningful Day



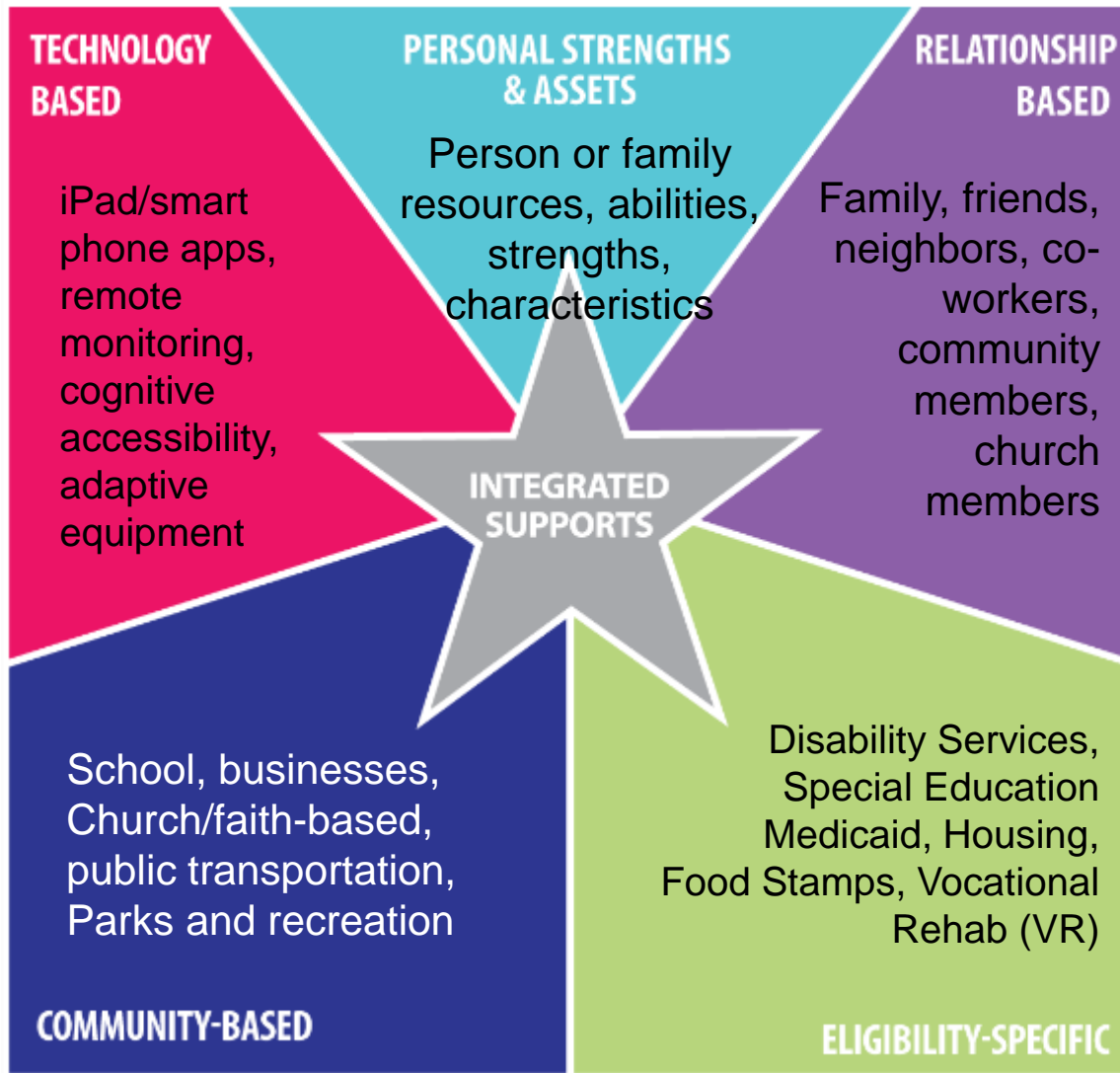
<https://youtu.be/cJAjxgl1un4>



Prioritize the Waiting List

- Purpose – Contact Everyone Waiting
 - Offer connections to “Emotional Support”
 - Provide Information and Navigation
 - Look at non-waiver supports that could meet needs
- Purpose – Focus on Needs
 - Change the conversation
 - Broaden ideas on where needs can be met
 - Use the Integrated Star to create ideas





Problem Solving & Navigation



No Wrong Door Planning Grant

- No Wrong Door One Year Planning Grant 2014
 - Twenty-Five States Awarded
 - Oklahoma's Health and Human Services Agencies
 - *Partnering Programs and Agencies with Aging and Disabilities*
- No Wrong Door Implementation Grant 2015
 - *Only five out of the 25 received the grant*
- Oklahoma's HHS Cabinet Secretary chose to continue planning
- Planning and Implementation of Data Sharing
- Create a Single Sign-on Web Portal for Aging and Disability
 - *Formal Services*
 - *Informal Services*
 - *Information*
 - *Community Resources*



Contact Information

Wanda Felty

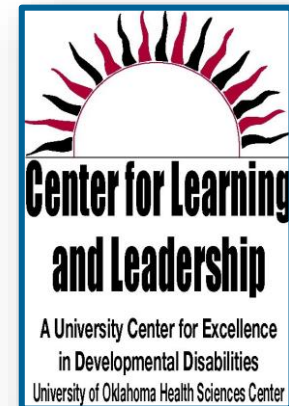
wanda-felty@ouhsc.edu

(405) 271-4500 ext. 41004

Angela Donley

Angela-
donley@oklahomafamilynetwork.org

(405) 226-3168



Q&A



LIFECOURSE TOOLS

LIFECOURSE TOOLS

LIFECOURSE PRINCIPLES

LIFECOURSE IN ACTION ▾

CONNECT ▾

ABOUT



LifeCourseTools.com



© 2016 UMKC INSTITUTE FOR HUMAN DEVELOPMENT, UCEDD | SUPPORTSTOFAMILIES.ORG

Innovations Webinar Series

Next webinar:

LifeCourse in Action: Connecticut – 9/29/16

Archived webinars:

- Overview of the LifeCourse Framework
- Focusing on the Front Door of Long Term Services & Supports
- We're All in This Together: Uniting the Movements for a Good Life
- Reframing the Conversation at All Levels: Tools for Change
- Technology & Strategies for Supporting Families
- LifeCourse in Action: Implementation at all Levels in Missouri
- LifeCourse in Action: Reaching the All in Tennessee





SUPPORTING FAMILIES

of individuals with intellectual & developmental disabilities

THE NATIONAL COMMUNITY OF PRACTICE • FUNDED BY THE ADMINISTRATION ON INTELLECTUAL & DEVELOPMENTAL DISABILITIES

- About
- The States
- Resources
- News & Events
- Contact

2016 Supporting Families 0

LATEST NEWS

Next -Innovations webinar announced!
 -LifeCourse Tools in Action: A Good Life for All in
 -Oklahoma



FUNDED by



ADMINISTRATION ON INTELLECTUAL AND DEVELOPMENTAL DISABILITIES

NATIONAL partners



Welcome!

The **Community of Practice for Supporting Families of Individuals with Intellectual & Developmental Disabilities** involves working with six states to develop systems of support for families throughout the lifespan of their family member with intellectual and developmental disabilities (I/DD).

The **Supporting Families** project is operated under a five-year grant awarded to NACDD by the Administration on Intellectual and Developmental Disabilities (AIDD) beginning October 2012. Grant partners include University of Missouri-Kansas City-Institute on Human Development (UMKC-IHD), Human Services Research Institute (HSRI) and the National Association of State Directors of Developmental Disabilities Services (NASDDDS).

MAILINGlist

Get updates about the national project, state teams, and supporting families!

First Name

Last Name

Email Address

Visit us online at supportstofamilies.org